

# KILINC

MAKİNA

[www.kilinctarmak.com](http://www.kilinctarmak.com)



BEREKETİ TAŞIYAN

**USTA ELLER**



**444 21 95**

[www.kilinctarmak.com](http://www.kilinctarmak.com)

ÜRÜN KATALOĞU





HAKKIMIZDA

KILINÇ MAKİNA SAN.TİC.LTD.ŞTİ. 1980 yılında Ahmet ve Kerim kardeşlerin tornacı olarak kurduğu ve o günlerde ülkemizde açığı olan tarım makineleri yedek parça üretimi ile işe başlamıştır.

1997 yılından itibaren Mehmet Ali KILINÇ'ın yönetiminde aktif bir yönetim ve pazarlama stratejisi uygulayarak ve kaliteyi ön planda tutarak üretimine hız katmıştır. Firmamız günün gereksinimlerine göre kendisini ve ürünlerini her geçen gün daha da geliştirerek alanında tecrübeli ve bol çeşit üretir bir firma haline gelmiştir.

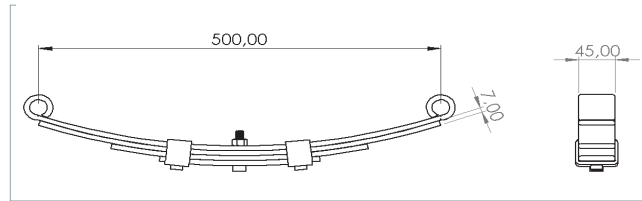
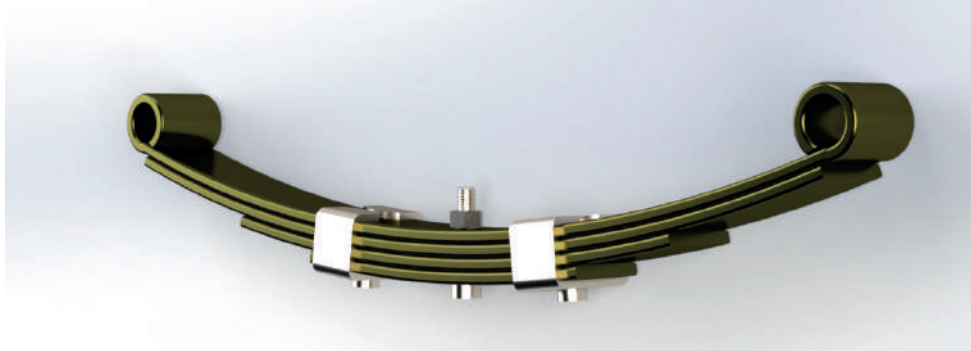
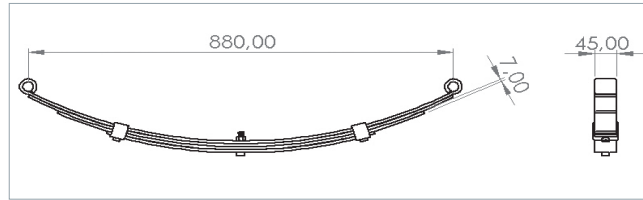
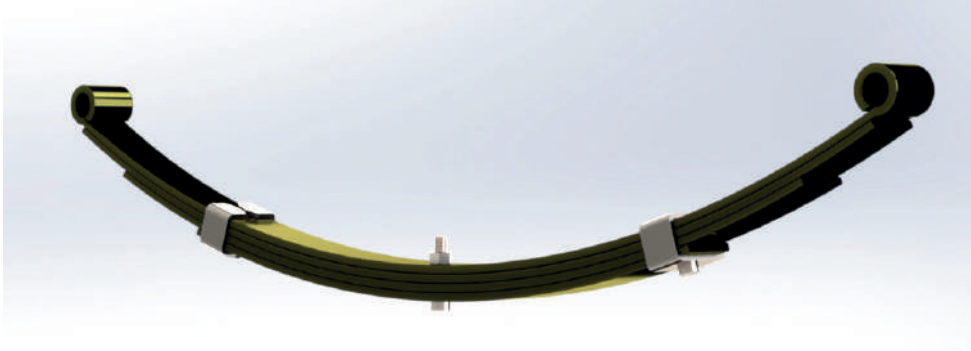
Firmamız bugün 6000 m<sup>2</sup> kapalı 7000 m<sup>2</sup> açık alana sahip fabrikasında başta Traktör römorkları olmak ve römork parçaları olmak üzere bir çok tarım aletleri yedek parçası üretmektedir. 200 m<sup>2</sup> kapalı alanı olan showroom ve satış ofisinden ise Türkiye çapındaki bayilerine ve yurtdışına satış ve pazarlama faaliyetlerini yürütmektedir.

Referanslarımız gururumuzdur. Firmamız dün olduğu gibi yarın da üretici ve çiftçilerin yanında ve yakınında iyiye ve kaliteye doğru yolculuğuna güvenle devam edecektir.



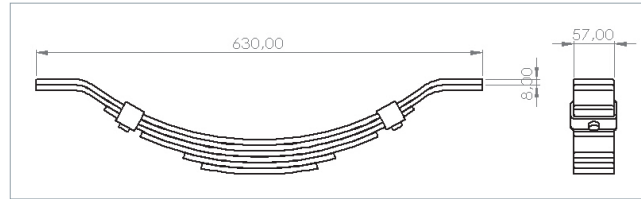
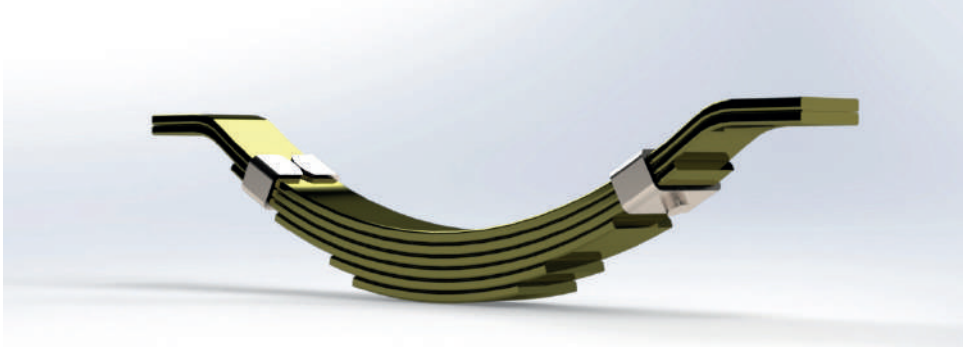
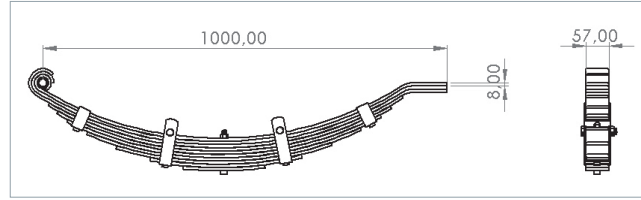
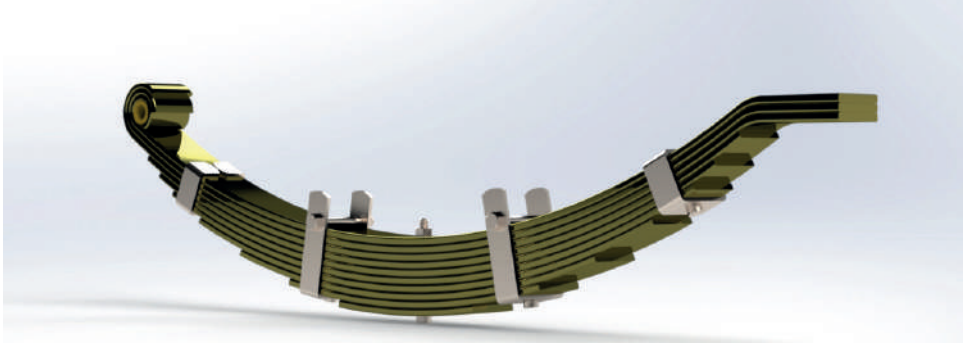
BEREKETİ TAŞIYAN  
**USTA ELLER**

## HAFİF TONAJ MAKAS



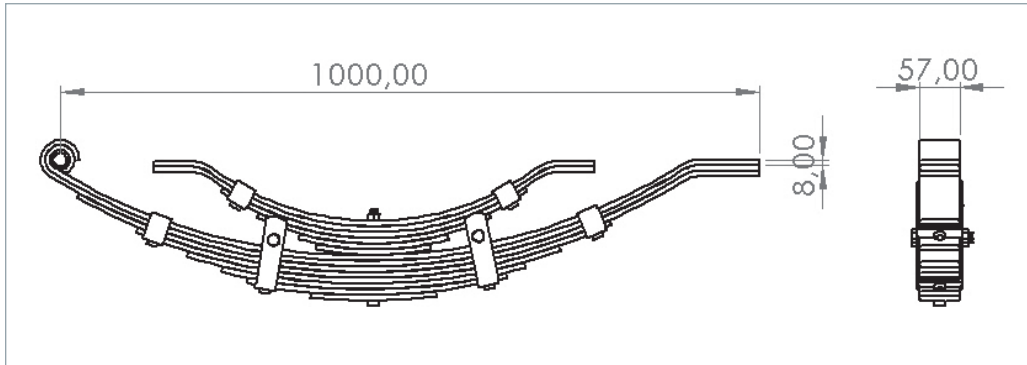
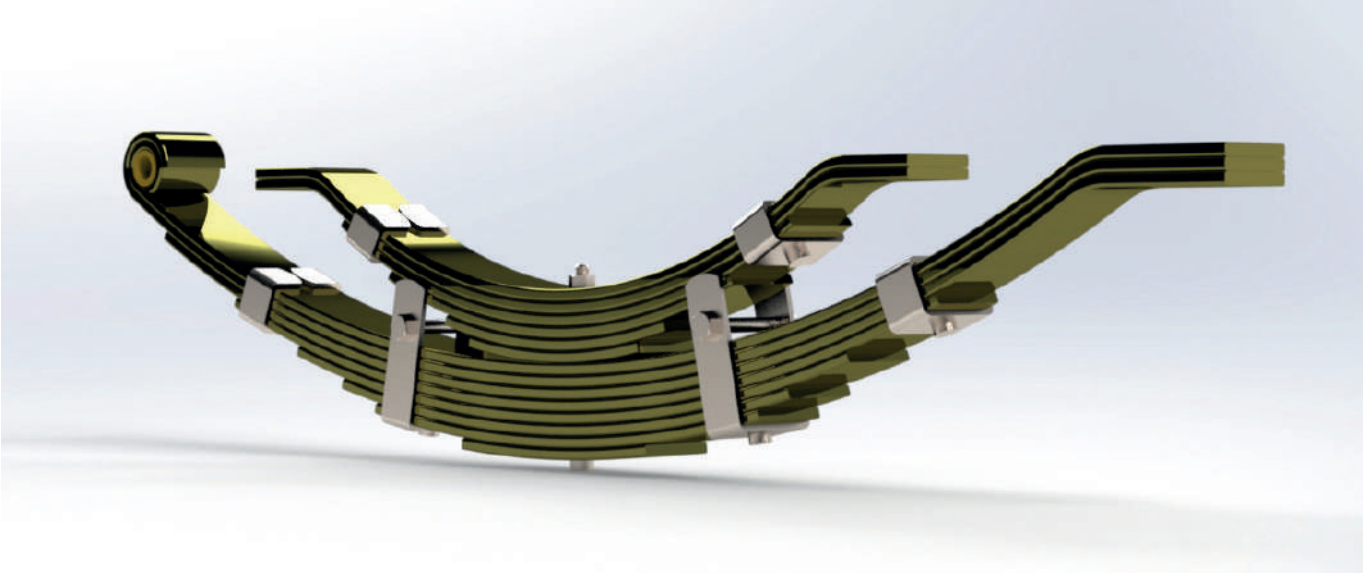
SİPARİŞ NO	CİNSİ	BOY	LAMA
KLC-10250	4 Kat	500	45/7 (Çift Küpe)
KLC-10251	4 Kat	880	45/7 (Çift Köpe)
KLC-10252	5 Kat	880	45/7 (Çift Köpe)
KLC-10253	6 Kat	880	45/7 (Çift Köpe)
KLC-10254	7 Kat	880	45/7 (Çift Köpe)

## STANDART MAKAS



SİPARİŞ NO'U	CİNSİ	BOY	LAMA
KLC-10255	3 Kat	750	57/8
KLC-10256	4 Kat	750	57/8
KLC-10257	6 Kat	1000	57/8
KLC-10258	7 Kat	1000	57/8
KLC-10259	8 Kat	1000	57/8
KLC-10260	10 Kat	1000	57/8
KLC-10261	12 Kat	1000	57/8
KLC-10262	Muavin Makas		70/10
KLC-10263	Muavin Makas		63/8
KLC-10264	Muavin Makas		57/8

## MUAVİNLİ MAKAS

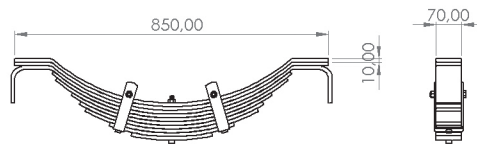
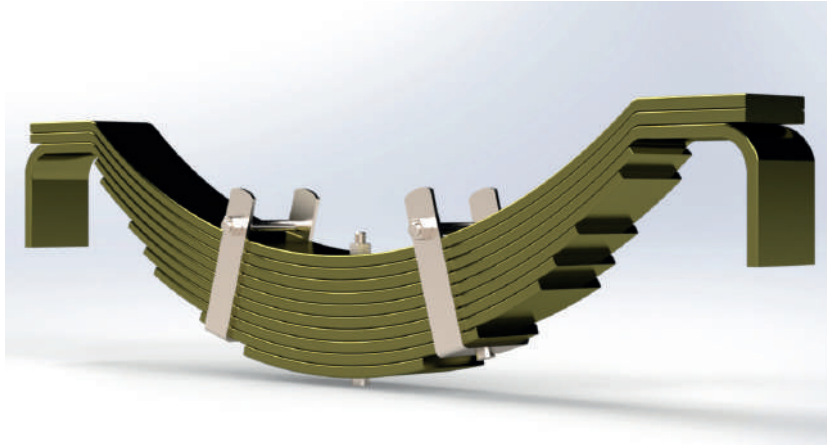
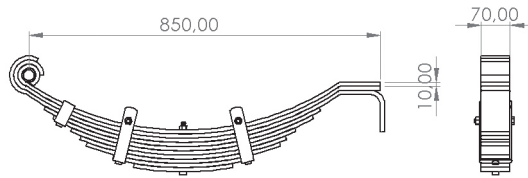
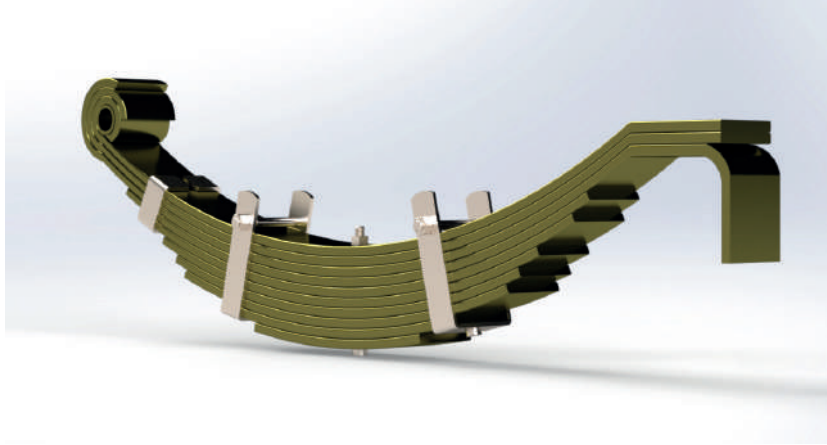


SİPARİŞ NO	CİNSİ	BOY	LAMA
KLC-10265	8 + mv	1000	57/8
KLC-10266	10 + mv	1000	57/8
KLC-10267	10 + mv	1000	57/8
KLC-10268	12 + mv	1000	57/8
KLC-10269	14 + mv	1000	57/8
KLC-10270	12 + mv	1100	57/8
KLC-10271	12 + mv	1200	57/8
KLC-10272	14 + mv	1100	57/8
KLC-10273	12 + mv	1000	63/8
KLC-10274	14 + mv	1000	63/8

SİPARİŞ NO	CİNSİ	BOY	LAMA
KLC-10275	12 + mv	1100	63/8
KLC-10276	12 + mv	1200	63/8
KLC-10277	8 + mv	1000	70/10
KLC-10278	10 + mv	1000	70/10
KLC-10279	12 + mv	1000	70/10
KLC-10280	10 + mv	1100	70/10
KLC-10281	12 + mv	1100	70/10
KLC-10282	10 + mv	1300	70/10
KLC-10283	12 + mv	1300	70/10

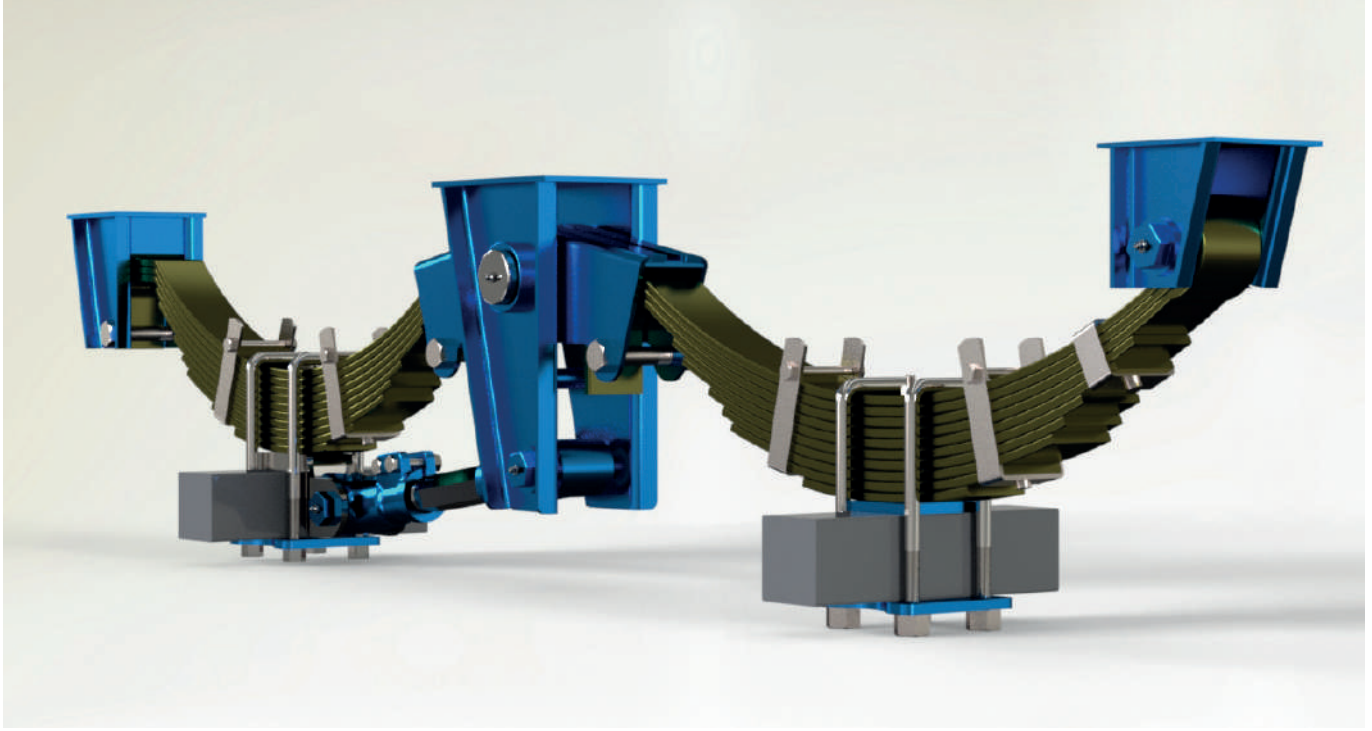


## TANDEM MAKAS



SİPARİŞ NO	CİNSİ
KLC-10284	Tandem Burçlu
KLC-10285	Tandem Çapalı

## TANDEM MAKAS



SİPARİŞ NO	MAKAS TİPİ	KAT	P mm	R mm	C mm	H mm	H1 mm	KAPASİTE KG.
KLC-10286	70X10X910	10	1000	1030	340	325	310	10.000
KLC-10287	70X10X910	12	1000	1030	340	325	310	15.000

## TANDEM MAKAS BAĞLANTI SETİ



SİPARİŞ NO	TİP	KAPASİTE kg
KLC-17700	Standart	10,000
KLC-17701	Standart	15,000
KLC-17702	Ayarlı Bubi Kolu	-
KLC-17703	Sabit Bubi Kolu	-
KLC-17704	Plastik Burç	-

## HİDROLİK LİFT



SİPARİŞ NO	KADEME T	KAPALI BOY A	KAPASİTE	DIŞ ÇAP G mm	STROK mm	RAKOR	YAĞ HACMİ (LT)
KLC-11400	2	40 cm	2 Ton	75	550	3/4"	-
KLC-11401	2	60 cm	2 Ton	75	850	3/4"	-
KLC-11402	2	40 cm	3 Ton	90	450	3/4"	-
KLC-11403	2	50 cm	3 Ton	90	650	3/4"	-
KLC-11404	2	60 cm	3 Ton	90	850	3/4"	-
KLC-11405	1	73 cm	5 Ton	115	500	3/4"	4,00
KLC-11406	2	63 cm	5 Ton	115	950	3/4"	6,50
KLC-11407	2	73 cm	5 Ton	115	150	3/4"	8,00
KLC-11408	2	90 cm	5 Ton	115	1320	3/4"	10,50
KLC-11409	3	63 cm	5 Ton	115	1360	3/4"	7,00
KLC-11410	3	75 cm	5 Ton	115	1750	3/4"	8,50
KLC-11411	3	80 cm	5 Ton	115	1900	3/4"	9,50
KLC-11412	3	90 cm	5 Ton	115	2200	3/4"	11,00
KLC-11413	3	63 cm	10 Ton	140	1360	3/4"	12,00
KLC-11414	3	75 cm	10 Ton	140	1750	3/4"	15,00
KLC-11415	3	80 cm	10 Ton	140	1900	3/4"	16,50
KLC-11416	3	85 cm	10 Ton	140	2050	3/4"	18,00
KLC-11417	3	90 cm	10 Ton	140	2200	3/4"	19,50
KLC-11417	4	63 cm	10 Ton	140	1800	3/4"	12,50
KLC-11418	4	75 cm	10 Ton	140	2335	3/4"	15,50
KLC-11419	4	80 cm	10 Ton	140	2520	3/4"	17,00
KLC-11420	4	90 cm	10 Ton	140	2920	3/4"	20,00
KLC-11421	4	100 cm	10 Ton	140	3320	3/4"	24,50
KLC-11422	5	40 cm	10 Ton	140	1300	3/4"	7,00
KLC-11423	5	63 cm	10 Ton	140	2300	3/4"	14,00
KLC-11424	5	75 cm	10 Ton	140	2700	3/4"	15,50



## MAFSALLI LİFT



SİPARİŞ NO	KADEME T	KAPALI BOYA	KAPASİTE	DIŞ ÇAP G mm	STROK mm	RAKOR	YAĞ HACMİ (LT)
KLC-11600	2	39 cm	5 Ton	115	500	3/4"	3,50
KLC-11601	3	63 cm	10 Ton	140	1360	3/4"	12,00
KLC-11602	4	63 cm	10 Ton	140	1800	3/4"	12,50
KLC-11603	5	40 cm	10 Ton	140	1300	3/4"	7,00
KLC-11604	5	63 cm	10 Ton	140	2300	3/4"	14,00
KLC-11605	3	63 cm	10 Ton 3 Yana Devirme	140	1360	3/4"	12,00

3 Yana devirme başlığı için fiyat alınız.

## BOĞAZDAN KEÇELİ KROMLU



SİPARİŞ NO	CİNSİ
KLC-11100	3 Kd. 63 cm. Boğazdan Keçeli Mafsallı
KLC-11101	3 Kd. 63 cm. Boğazdan Keçeli Kromlu
KLC-11102	3 Kd. 73 cm. Boğazdan Keçeli Kromlu
KLC-11103	3 Kd. 80 cm. Boğazdan Keçeli Kromlu
KLC-11104	3 Kd. 90 cm. Boğazdan Keçeli Kromlu
KLC-11105	4 Kd. 63 cm Boğazdan Keçeli Mafsallı

SİPARİŞ NO	CİNSİ
KLC-11106	4 Kd. 63 cm. Boğazdan Keçeli Kromlu
KLC-11107	4 Kd. 73 cm. Boğazdan Keçeli Kromlu
KLC-11108	4 Kd. 80 cm. Boğazdan Keçeli Kromlu
KLC-11109	4 Kd. 90 cm. Boğazdan Keçeli Kromlu
KLC-11110	4 Kd. 100 cm. Boğazdan Keçeli Kromlu

## TELESKOPİK SİLİNDİRLER



SİPARİŞ NO	ÜRÜN AÇIKLAMASI	ÖLÇÜLER
KLC-11600	2 KDM 63 CM 5 TON DARKOVAN LİFT	105x90x75
KLC-11601	2 KDM 73 CM 5 TON DARKOVAN LİFT	105x90x75
KLC-11602	2 KDM 80 CM 5 TON DARKOVAN LİFT	105x90x75
KLC-11603	2 KDM 90 CM 5 TON DARKOVAN LİFT	105x90x75
KLC-11604	3 KDM 63 CM 5 TON DARKOVAN LİFT	105x90x75x60
KLC-11605	3 KDM 73 CM 5 TON DARKOVAN LİFT	105x90x75x60
KLC-11606	3 KDM 80 CM 5 TON DARKOVAN LİFT	105x90x75x60
KLC-11607	3 KDM 90 CM 5 TON DARKOVAN LİFT	105x90x75x60
KLC-11608	4 KDM 63 CM 5 TON DARKOVAN LİFT	105x90x75x60x45
KLC-11609	4 KDM 73 CM 5 TON DARKOVAN LİFT	105x90x75x60x45
KLC-11610	4 KDM 80 CM 5 TON DARKOVAN LİFT	105x90x75x60x45
KLC-11611	4 KDM 90 CM 5 TON DARKOVAN LİFT	105x90x75x60x45
KLC-11612	3 KDM 63 CM 10 TON LİFT	125x105x90x75
KLC-11613	3 KDM 73 CM 10 TON LİFT	125x105x90x75
KLC-11614	3 KDM 80 CM 10 TON LİFT	125x105x90x75
KLC-11615	3 KDM 90 CM 10 TON LİFT	125x105x90x75
KLC-11616	3 KDM 100 CM 10 TON LİFT	125x105x90x75
KLC-11617	3 KDM 63 CM 15 TON LİFT	146x125x105x90
KLC-11618	3 KDM 73 CM 15 TON LİFT	146x125x105x90
KLC-11619	3 KDM 80 CM 15 TON LİFT	146x125x105x90
KLC-11620	3 KDM 90 CM 15 TON LİFT	146x125x105x90
KLC-11621	3 KDM 100 CM 15 TON LİFT	146x125x105x90
KLC-11622	4 KDM 63 CM 10 TON LİFT	125x105x90x75x60
KLC-11623	4 KDM 73 CM 10 TON LİFT	125x105x90x75x60
KLC-11624	4 KDM 80 CM 10 TON LİFT	125x105x90x75x60
KLC-11625	4 KDM 90 CM 10 TON LİFT	125x105x90x75x60
KLC-11626	4 KDM 100 CM 10 TON LİFT	125x105x90x75x60
KLC-11627	4 KDM 63 CM 15 TON LİFT	146x125x105x90x75
KLC-11628	4 KDM 73 CM 15 TON LİFT	146x125x105x90x75
KLC-11629	4 KDM 80 CM 15 TON LİFT	146x125x105x90x75
KLC-11630	4 KDM 90 CM 15 TON LİFT	146x125x105x90x75
KLC-11631	4 KDM 100 CM 15 TON LİFT	146x125x105x90x75
KLC-11632	5 KDM 63 CM 10 TON LİFT	125x105x90x75x60x45
KLC-11633	5 KDM 73 CM 10 TON LİFT	125x105x90x75x60x45
KLC-11634	5 KDM 80 CM 10 TON LİFT	125x105x90x75x60x45
KLC-11635	5 KDM 90 CM 10 TON LİFT	125x105x90x75x60x45
KLC-11636	5 KDM 100 CM 10 TON LİFT	125x105x90x75x60x45
KLC-11637	5 KDM 63 CM 15 TON LİFT	146x125x105x90x75x60
KLC-11638	5 KDM 73 CM 15 TON LİFT	146x125x105x90x75x60
KLC-11639	5 KDM 80 CM 15 TON LİFT	146x125x105x90x75x60
KLC-11640	5 KDM 90 CM 15 TON LİFT	146x125x105x90x75x60
KLC-11641	5 KDM 100 CM 15 TON LİFT	146x125x105x90x75x60

## ÇİFT YÖNLÜ HİDROLİK SİLİNDİRLER

SİPARİŞ NO	LİFTİN CİNSİ	MODEL	BORU ÇAPİ A mm	MİL ÇAPİ B mm	DELİK MERKEZİ D mm	STROK C mm
KLC-11800	Goble Lift	5	63x75	Ø 45	750	495
KLC-11801	Goble Lift	3	80x95	Ø 40	450	190
KLC-11802	Goble Lift	10	105x90	Ø 50	480	340
KLC-11803	Goble Lift (Mafsallı)	6	63x75	Ø 40	950	510
KLC-11804	Goble Lift (Mafsallı)	6	63x75	Ø 40	800	370
KLC-11805	Kova Lift	4	63x75	Ø 45	525	300
KLC-11806	Rotatiller Lifti	2	40x50	Ø 25	465	285
KLC-11807	Rotatiller Lifti	2	40x50	Ø 25	620	430
KLC-11808	Rotatiller Lifti	2	40x50	Ø 25	715	535
KLC-11809	Orta Kol Lifti (Mafsallı)	1	63x75	Ø 45	750	415
KLC-11810	Ön Kepçe Lifti	5	63x75	Ø 45	910	665
KLC-11811	Fındık Patoz Lifti	7	60x70	Ø 40	600	395
KLC-11812	Fındık Patoz Lifti	7	60x70	Ø 40	910	695
KLC-11813	Kapak Lifti	8	50x60	Ø 30	600	395
KLC-11814	Kriko Lifti	9	63x75	Ø 40	650	440
KLC-11815	Mibzer lifti	12	50x60	Ø 30	335	130
KLC-11816	Diskaro Lifti	-	50x60	Ø 30	945	760
KLC-11817	Arka Kapak Lifti	11	63x75	Ø 50	685	575
KLC-11818	Arka Kapak Lifti	11	63x75	Ø 50	950	850

**TRAKTÖR ORTA KOL LİFTİ HİDROLİK**

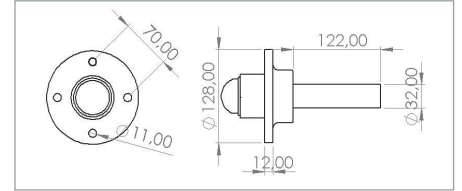
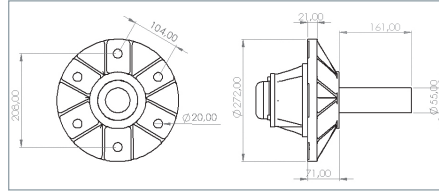
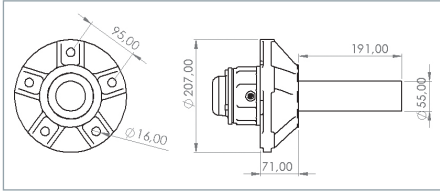
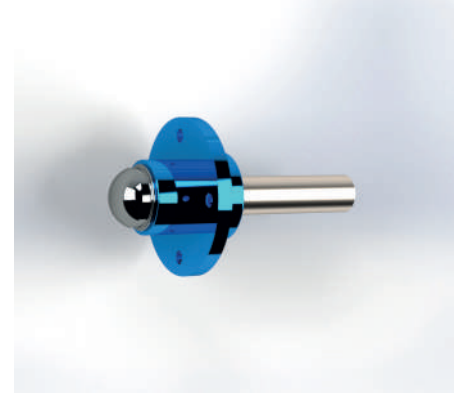
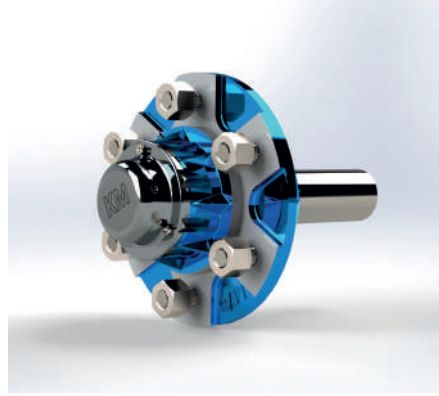
SİPARİŞ NO	LİFTİN CİNSİ	DELİK MERKEZİ mm	BORU ÇAPI mm	MİL ÇAPI mm	STROK C mm
KLC-11900	Orta Kol Lifti	500	63x75	40	200
KLC-11901	Orta Kol Lifti	550	63x75	40	250
KLC-11902	Orta Kol Lifti	600	63x75	40	300
KLC-11903	Orta Kol Lifti	650	63x75	40	350
KLC-11904	Kancalı Lift	700	63x75	40	400
KLC-11905	Yan Kol Lifti	600	63x75	40	
KLC-11906	Orta Kol Lift Hortumu 2 Adet Jacklı				

**HİDROLİK LİFT EKİPMANI**

SİPARİŞ NO	ÜRÜN CİNSİ
KLC-12100	Erkek Jack
KLC-12101	Dişi Jack
KLC-12102	3/4 Rakor
KLC-12103	5/8 Rakor
KLC-12104	Nipel 3/4
KLC-12105	Nipel 3/4 - 1/2
KLC-12106	Nipel 3/4 - Te
KLC-12107	Nipel 5/8
KLC-12108	Nipel 5/8 - 1/2
KLC-12109	Nipel 5/8 Te



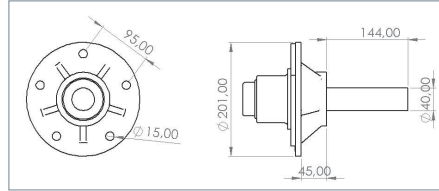
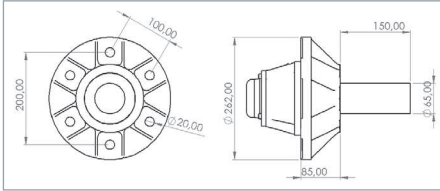
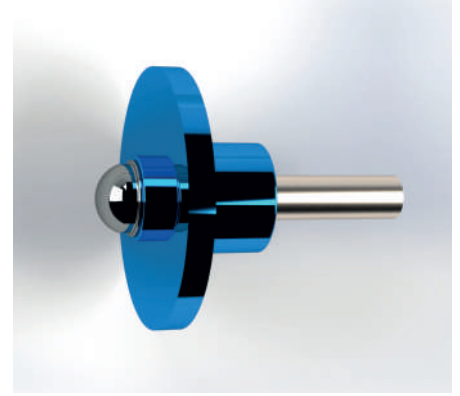
## MONTAJLI PORYA



SİPARİŞ NO	RULMAN ÖLÇÜSÜ	AKİS	BİJON	JANT GÖBEĞİ - A	BİJON GÖBEĞİ - B	KAPASİTE A kg
KLC-13600	30204-30205	32 Ø	4	58	98	450
KLC-13601	30204*30205	32 Ø	3*4	58	149*98	500
KLC-13602	30204*30205	30 □	4	58	98	550
KLC-13603	30204*30207	35 □	5	66	112	700
KLC-13604	30206*30207	40 Ø	5	110	160	850
KLC-13605	30206*30207	40 □	5	110	160	850
KLC-13606	30207*30209	50 Ø	5	110	160	1300
KLC-13607	30207*30209	50 □	5	110	160	1400
KLC-13608	32207*32209	50 Ø	5	110	160	1400
KLC-13609	32207*32209	50 □	5	110	160	1500

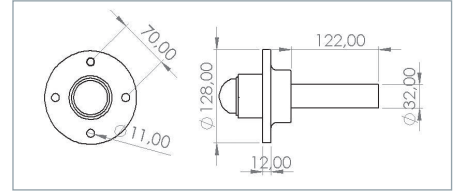
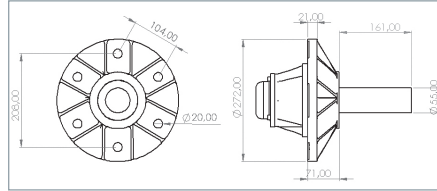
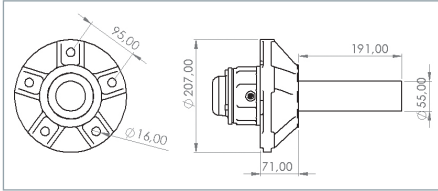
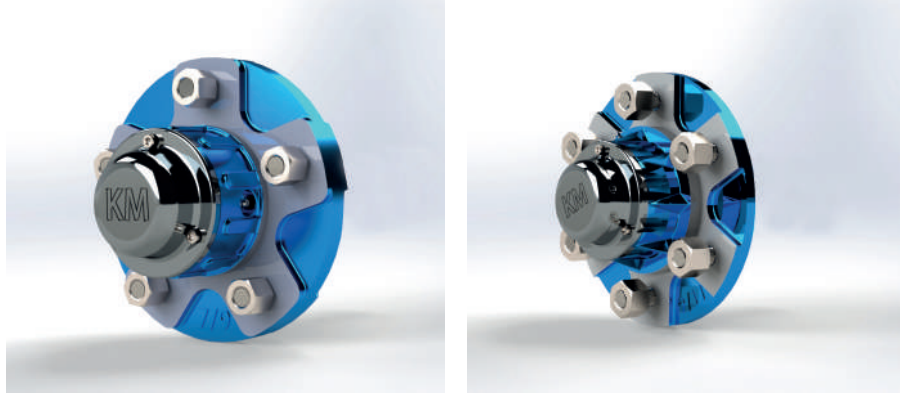


## MONTAJLI PORYA



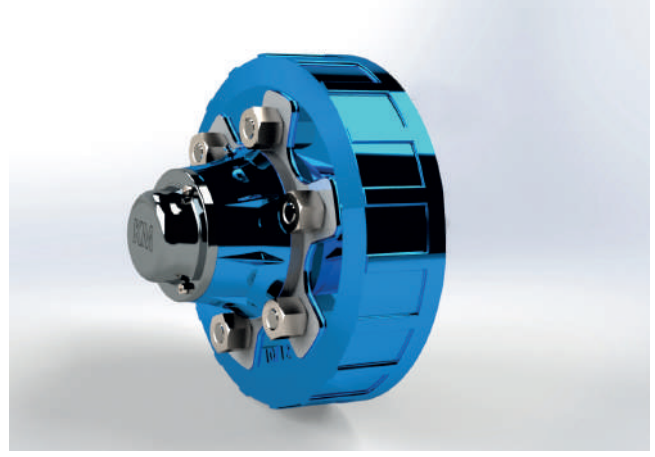
SİPARİŞ NO	RULMAN ÖLÇÜSÜ	AKİS	BİJON	JANT GÖBEĞİ - A	BİJON GÖBEĞİ - B	KAPASİTE A kg
KLC-13700	30208*30210	55 Ø	6	160	205	1800
KLC-13701	30208*30210	55 □	6	160	205	2000
KLC-13702	32208*32210	55 Ø	6	160	205	2150
KLC-13703	32208*32210	55 □	6	160	205	2250
KLC-13704	30209*30211	60 Ø	6	160	205	2700
KLC-13705	32209*32211	60 □	6	160	205	2850
KLC-13706	32209*32211	65 □	6	160	205	3000
KLC-13707	32210*32212	65 Ø	6	160	205	3150
KLC-13708	32210*32212	65 □	6	160	205	3250
KLC-13709	32210*32212	70 □	6	160	205	3500
KLC-13710	32211*32213	70 □	6	160	205	3650
KLC-13711	32211*32213	70 Ø	6	160	205	3500
KLC-13712	32211*32213	80 □	8	220	275	4000
KLC-13713	32211*32213	90 □	8	220	275	4300
KLC-13714	32213*32217	90 □	10	280	335	4750
KLC-13715	32213*32217	100 □	10	280	335	5000

## İŞLENMİŞ PORYA



SİPARİŞ NO	RULMAN ÖLÇÜSÜ	BİJON	JANT GÖBEĞİ - A	BİJON GÖBEĞİ - B
KLC-13800	30204*30205	3*4	58	149*98
KLC-13801	30204*30205	4	58	98
KLC-13802	30206*30207	5	94	98
KLC-13803	30206*30207	5	110	112
KLC-13804	30206*30208	5	94	160
KLC-13805	30207*30209	5	110	160
KLC-13806	32207*32209	5	110	160
KLC-13807	30207*30209 (DÖVME)	5	110	160
KLC-13808	30208*30210	6	160	205
KLC-13809	32208*32210	6	160	205
KLC-13811	30209*30211	6	160	205
KLC-13812	32209*32211	6	160	205
KLC-13813	32210*32212	6	160	205
KLC-13814	32211*32213	6	160	205
KLC-13815	32210*32212	8	220	275
KLC-13816	32211*32213	8	220	275
KLC-13817	32213*32217	10	280	335

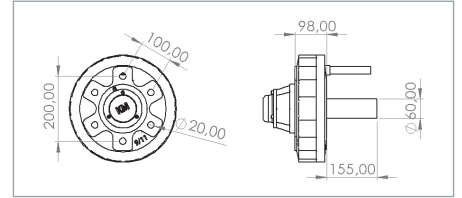
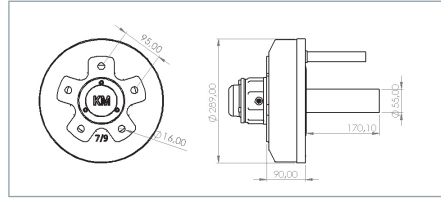
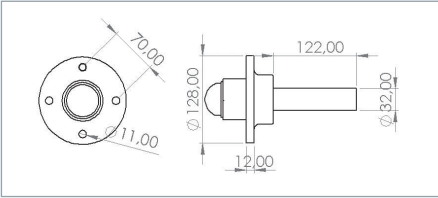
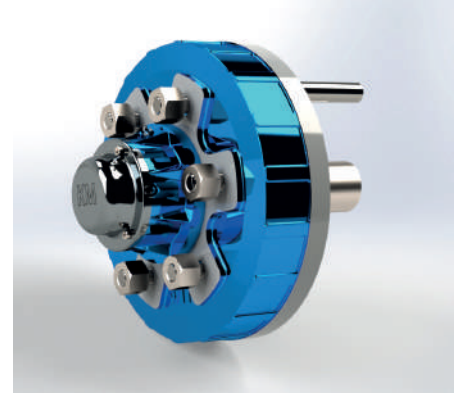
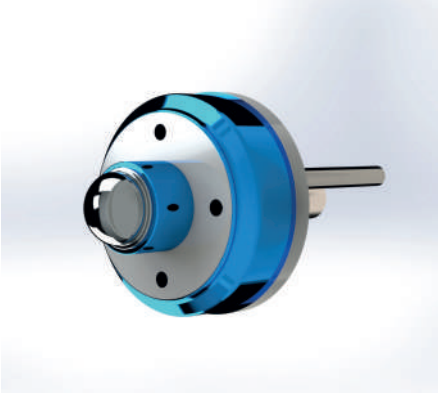
NOT: Sadece Porya

**İŞLENMİŞ KAMPANA**

SİPARİŞ NO	RULMAN ÖLÇÜSÜ	BİJON	JANT GÖBEĞİ - A	BİJON GÖBEĞİ - B
KLC-13900	30204*30205	130*30	58	98
KLC-13901	30204*30205	185*30	58	149*98
KLC-13902	30204*30207	200*50	66	112
KLC-13903	30206*30208	200*50	94	140
KLC-13904	30206*30208	200*50	110	160
KLC-13905	30207*30209	260*50	110	160
KLC-13906	32207*32209	260*50	110	205
KLC-13907	30208*30210	300*60	160	205
KLC-13908	32208*32210	300*60	160	205
KLC-13909	30209*30211	300*60	160	205
KLC-13910	32209*32211	300*60	160	205
KLC-13911	32210*32212	300*60	160	205
KLC-13912	32211*32213	300*60	160	205
KLC-13913	32210*32212	300*90	220	275
KLC-13914	32211*32213	300*90	220	275
KLC-13915	32213*32217	400*80	335	335

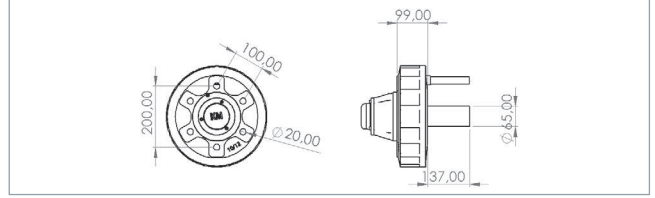
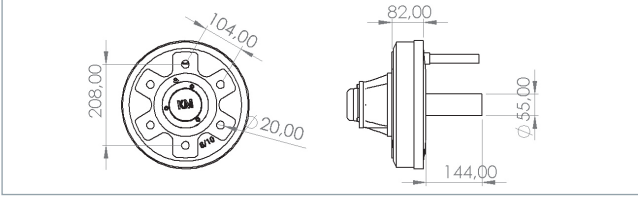
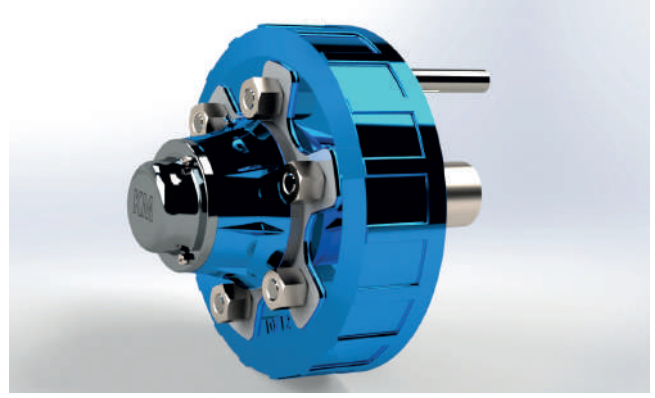
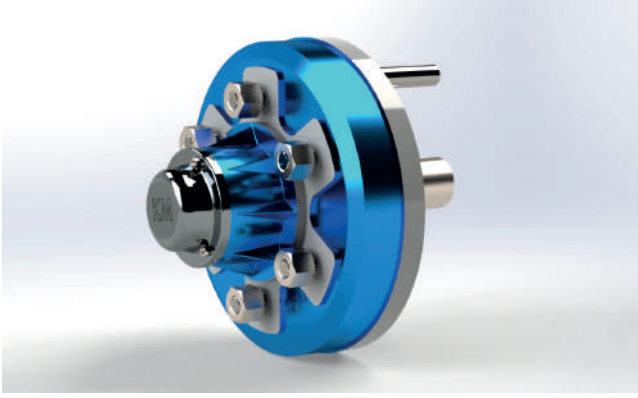
NOT: Sadece Kampana

## MONTAJLI KAMPANA



SİPARİŞ NO	RULMAN ÖLÇÜSÜ	AKİS	BİJON	BALATA	JANT GÖBEĞİ - A	BİJON GÖBEĞİ - B	KAPASİTE A kg
KLC-13500	30204*30205	32 Ø	4	130*30	58	98	450
KLC-13501	30204*30205	30 □	4	130*30	58	98	500
KLC-13502	30204*30205	32 Ø	3*4	185*30	58	149*98	500
KLC-13503	30204*30207	35 □	5	200*50	66	112	700
KLC-13504	30206*30208	50 □	5	200*50	94	140	900
KLC-13505	30206*30208	50 □	5	200*50	110	160	1000
KLC-13506	30207*30209	50 Ø	5	260*50	110	160	1400
KLC-13507	32207*32209	50 □	5	260*50	110	160	1500
KLC-13508	30208*30210	55 Ø	6	260*50	160	205	1500
KLC-13509	30208*30210	55 □	6	260*50	160	205	1600
KLC-13510	30208*30210	60 Ø	6	300*60	160	205	1900
KLC-13511	30208*30210	60 □	6	300*60	160	205	2000
KLC-13512	32208*32210	60 Ø	6	300*60	160	205	2100
KLC-13513	32208*32210	60 □	6	300*60	160	205	2250

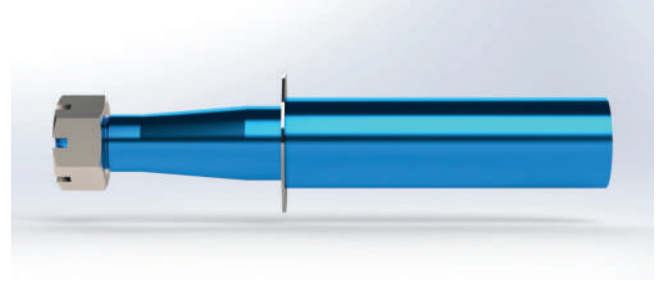
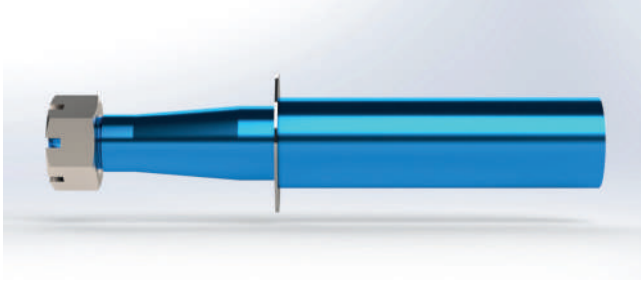
## MONTAJLI KAMPANA



SİPARİŞ NO	RULMAN ÖLÇÜSÜ	AKIS	BİJON	BALATA	JANT GÖBEĞİ - A	BİJON GÖBEĞİ - B	KAPASİTE A kg
KLC-13514	30209*30211	60 Ø	6	300*60	160	205	2400
KLC-13515	32209*32211	60 □	6	300*60	160	205	2500
KLC-13516	32209*32211	65 □	6	300*60	160	205	2600
KLC-13517	32210*32212	65 Ø	6	300*60	160	205	3250
KLC-13518	32210*32212	70 □	6	300*60	160	205	3600
KLC-13519	32211*32213	70 Ø	6	300*60	160	205	3750
KLC-13520	32211*32213	80 □	6	300*60	160	205	4000
KLC-13521	32210*32212	70 □	8	300*90	220	275	3650
KLC-13522	32210*32212	80 □	8	300*90	220	275	3750
KLC-13523	32211*32213	80 □	8	300*90	220	275	4150
KLC-13524	32211*32213	90 □	8	300*90	220	275	4250
KLC-13525	32213*32217	90 □	10	400*80	280	335	5000
KLC-13526	32213*32217	100 □	10	400*80	280	335	5500



## AKİS ( SOMUNLU VE KEÇELİ / PULLU )



SİPARİŞ NO	AKİS MALZEMESİ A	RULMAN ÖLÇÜSÜ
KLC-10700	32 Ø	30204/30205
KLC-10701	30 ☒	30204/30205
KLC-10702	35 Ø	30204/30207
KLC-10703	35 ☒	30204/30207
KLC-10704	40 Ø	30206/30207
KLC-10705	40 ☒	30206/30207
KLC-10706	50 Ø	30206/30208
KLC-10707	50 Ø	30207/30209
KLC-10708	50 Ø	32207/32209
KLC-10709	50 ☒	32207/32209
KLC-10710	55 Ø	30208/30210
KLC-10711	55 Ø	32208/32210
KLC-10712	60 Ø	32209/32211

SİPARİŞ NO	AKİS MALZEMESİ A	RULMAN ÖLÇÜSÜ
KLC-10713	60 ☒	32209/32211
KLC-10714	65 ☒	32209/32211
KLC-10715	65 Ø	32210/32212
KLC-10716	65 ☒	32210/32212
KLC-10717	70 ☒	32210/32212
KLC-10718	70 ☒	32211/32213
KLC-10719	80 ☒	32211/32213
KLC-10720	80 ☒	32211/32215
KLC-10721	90 ☒	32211/32215
KLC-10722	90 ☒	32213/32216
KLC-10723	90 ☒	32213/32217
KLC-10724	100 ☒	32213/32217
KLC-10725	120 Ø	32215/33021

## FREN BALATASI

SİPARİŞ NO	ÖLÇÜ AXB mm
KLC-10800	130x30
KLC-10801	185x30
KLC-10802	200x50
KLC-10803	260x50
KLC-10804	300x60
KLC-10805	310x60

SİPARİŞ NO	ÖLÇÜ AXB mm
KLC-10806	300x90
KLC-10807	350x60
KLC-10808	350x80
KLC-10809	400x80
KLC-10810	400x120
KLC-10811	420x200

## RULMAN

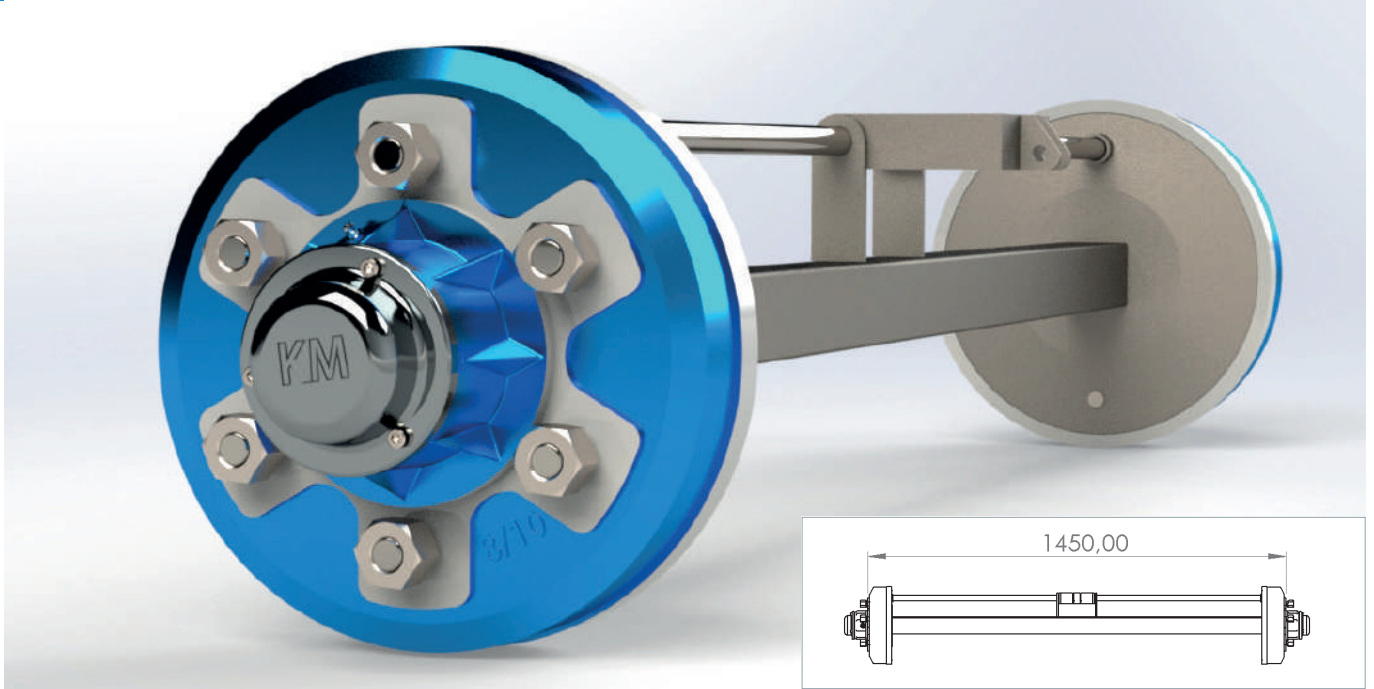


SİPARİŞ NO	CİNSİ
KLC-10900	30207 Rulman
KLC-10901	30208 Rulman
KLC-10902	30209 Rulman
KLC-10903	30210 Rulman
KLC-10904	30211 Rulman

SİPARİŞ NO	CİNSİ
KLC-10905	30212 Rulman
KLC-10906	32207 Rulman
KLC-10907	32208 Rulman
KLC-10908	32209 Rulman
KLC-10909	32210 Rulman

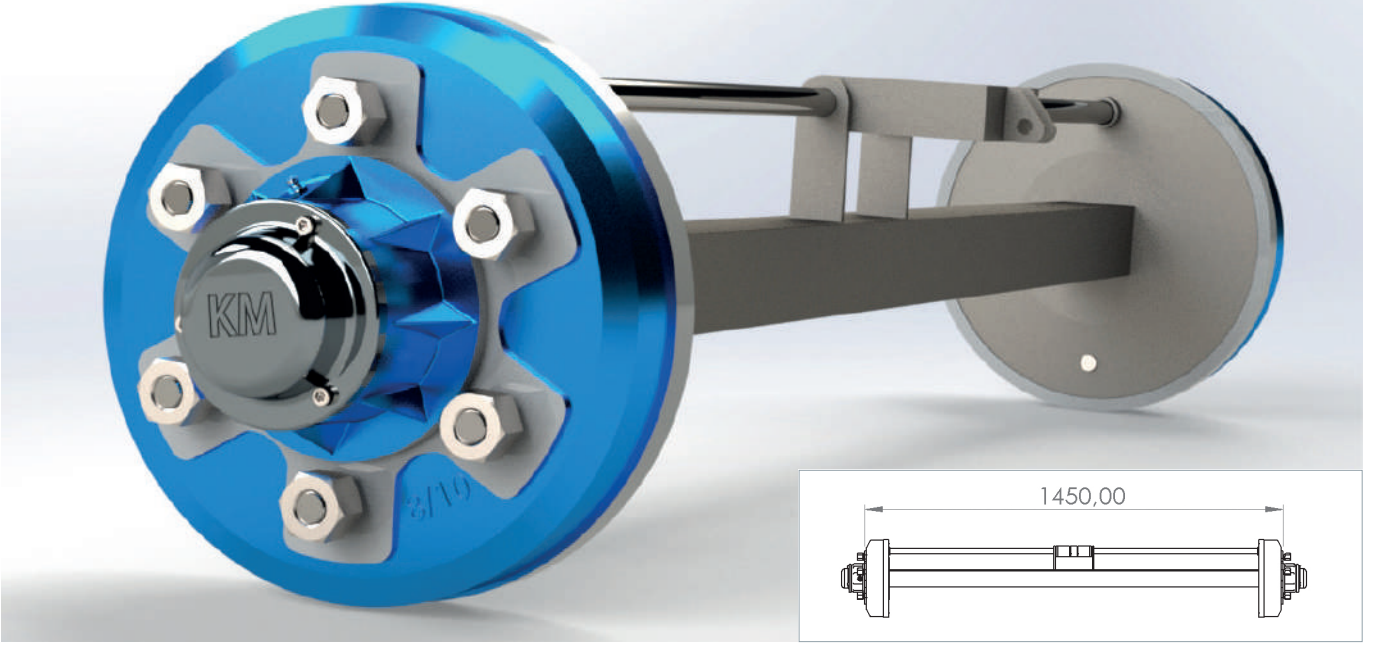
SİPARİŞ NO	CİNSİ
KLC-10910	32211 Rulman
KLC-10911	32212 Rulman
KLC-10912	32213 Rulman
KLC-10913	32215 Rulman

## FRENLİ DİNGİLLER (KARE)



SİPARİŞ NO	RULMAN ÖLÇÜSÜ	KARE	BİJON	BALATA	JANT GÖBEĞİ A	BİJON GÖBEĞİ B	KAPASİTE A	KAPASİTE B	KAPASİTE C	İZ BOYU D
KLC-12200	30204*30205	30	4	130*30	58	98	700	900	600	1.250
KLC-12201	30205*30206	35	3*4	185*30	58	149*98	800	1000	700	1.250
KLC-12202	30205*30207	40	5	200*50	66	112	1200	1350	1150	1.250
KLC-12203	30206*30208	45	5	200*50	94	140	1600	1800	1500	1.450
KLC-12204	30206*30208	45	5	200*50	110	160	1800	2000	1700	1.450
KLC-12205	30207*30209	50	5	260*50	110	160	2750	3000	2600	1.450
KLC-12206	32207*32209	55	6	260*50	160	205	3000	3250	2900	1.450
KLC-12207	30208*30210	60	6	300*60	160	205	3500	4000	3300	1.550
KLC-12208	30208*30210	65	6	300*60	160	205	4000	4500	3800	1.550
KLC-12209	32208*32210	70	6	300*60	160	205	4050	4750	4000	1.550
KLC-12210	30209*30211	60	6	300*60	160	205	4500	5000	4300	1.550
KLC-12211	32209*32211	65	6	300*60	160	205	5000	5500	4800	1.550
KLC-12212	32209*32211	70	6	300*60	160	205	5500	6000	5300	1.550
KLC-12213	32210*32212	70	6	300*60	160	205	6500	7000	6250	1.550
KLC-12214	32210*32212	80	6	300*60	160	205	6000	6500	5800	1.550
KLC-12215	32211*32213	80	6	300*60	160	205	7000	7500	6750	1.650
KLC-12216	32211*32213	100	6	300*60	160	205	7250	7750	7000	1.650
KLC-12217	32210*32212	80	8	300*60	220	275	7500	8000	7300	1.650
KLC-12218	32210*32212	100	8	300*90	220	275	7500	8000	7300	1.650
KLC-12219	32211*32213	80	8	300*90	220	275	8000	8000	7800	1.650
KLC-12220	32211*32213	100	8	350*60	220	275	6000	6500	5800	1.650
KLC-12221	32213*32217	100	10	400*80	280	335	8000	8500	7800	1.950

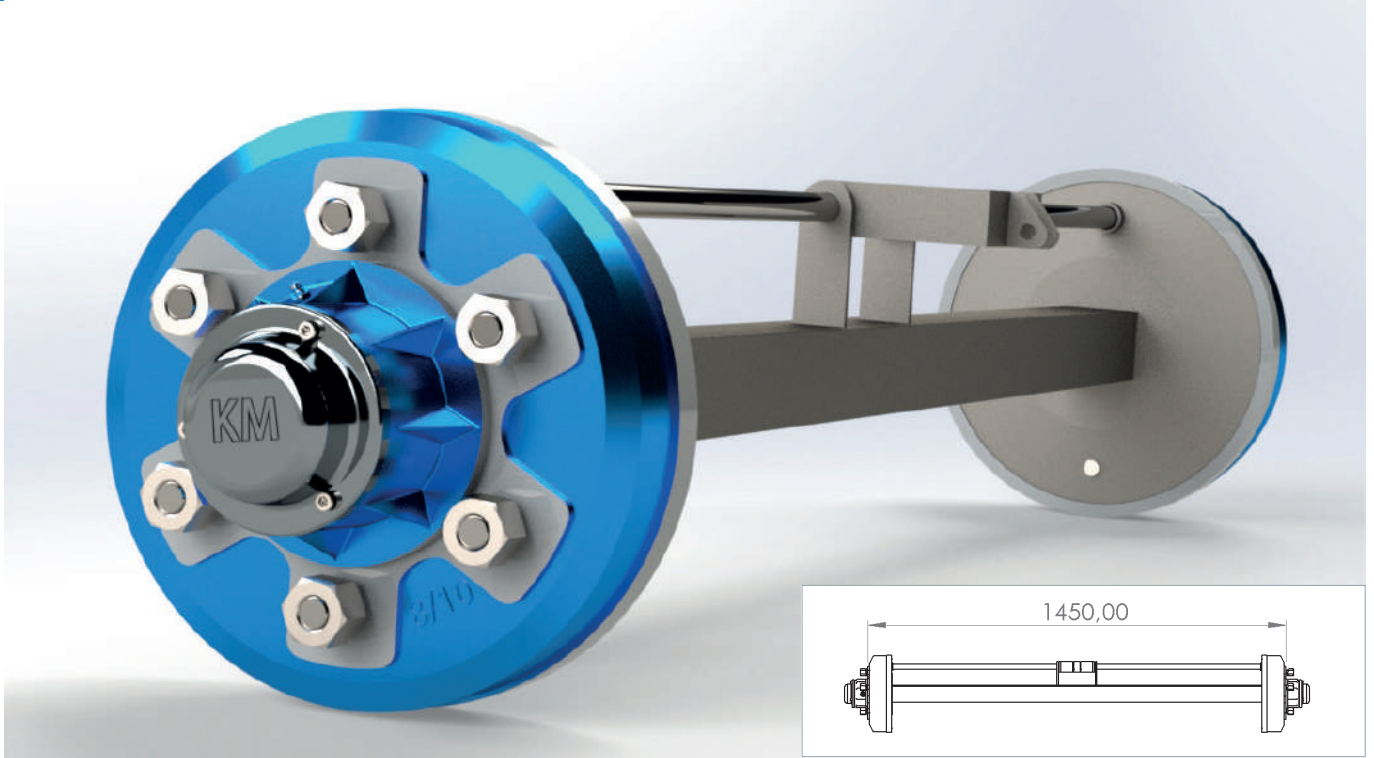
## FRENLİ DİNGİLLER (KÖŞEBENT)



SİPARİŞ NO	RULMAN ÖLÇÜSÜ	KÖŞE BENT	BİJON	BALATA	JANT GÖBEĞİ A	BİJON GÖBEĞİ B	KAPASİTE A	KAPASİTE B	KAPASİTE C	İZ BOYU D
KLC-12300	30204*30205	40	4	130*30	58	98	700	900	600	1.250
KLC-12301	30205*30206	40	3*4	185*30	58	149*98	800	1000	700	1.250
KLC-12302	30205*30207	40	5	200*50	66	112	1200	1350	1150	1.250
KLC-12303	30206*30208	50	5	200*50	94	140	1600	1800	1500	1.450
KLC-12304	30206*30208	50	5	200*50	110	160	1800	2000	1700	1.450
KLC-12305	30207*30209	60	5	260*50	110	160	2750	3000	2600	1.450
KLC-12306	32207*32209	70	5	260*50	160	205	3000	3250	2900	1.450
KLC-12307	30208*30210	70	6	300*60	160	205	3500	4000	3300	1.550
KLC-12308	30208*30210	80	6	300*60	160	205	4000	4500	3800	1.550
KLC-12309	30209*30211	70	6	300*60	160	205	4500	5000	4300	1.550
KLC-12310	32209*32211	80	6	300*60	160	205	5500	6000	5300	1.550
KLC-12311	32210*32212	80	6	300*60	160	205	6500	7000	6250	1.550
KLC-12312	32210*32212	100	6	300*60	160	205	6000	6500	5800	1.550
KLC-12313	32211*32213	80	6	300*60	160	205	7000	7500	6750	1.650
KLC-12314	32211*32213	100	6	300*60	160	205	7250	7750	7000	1.650
KLC-12315	32210*32212	80	8	300*60	220	275	7500	8000	7300	1.650
KLC-12316	32210*32212	100	8	300*90	220	275	7500	8000	7300	1.650
KLC-12317	32211*32213	80	8	300*90	220	275	8000	8000	7800	1.650
KLC-12318	32211*32213	100	8	350*60	220	275	6000	6500	5800	1.650
KLC-12319	32213*32217	120	10	400*80	280	335	8000	8500	7800	1.950



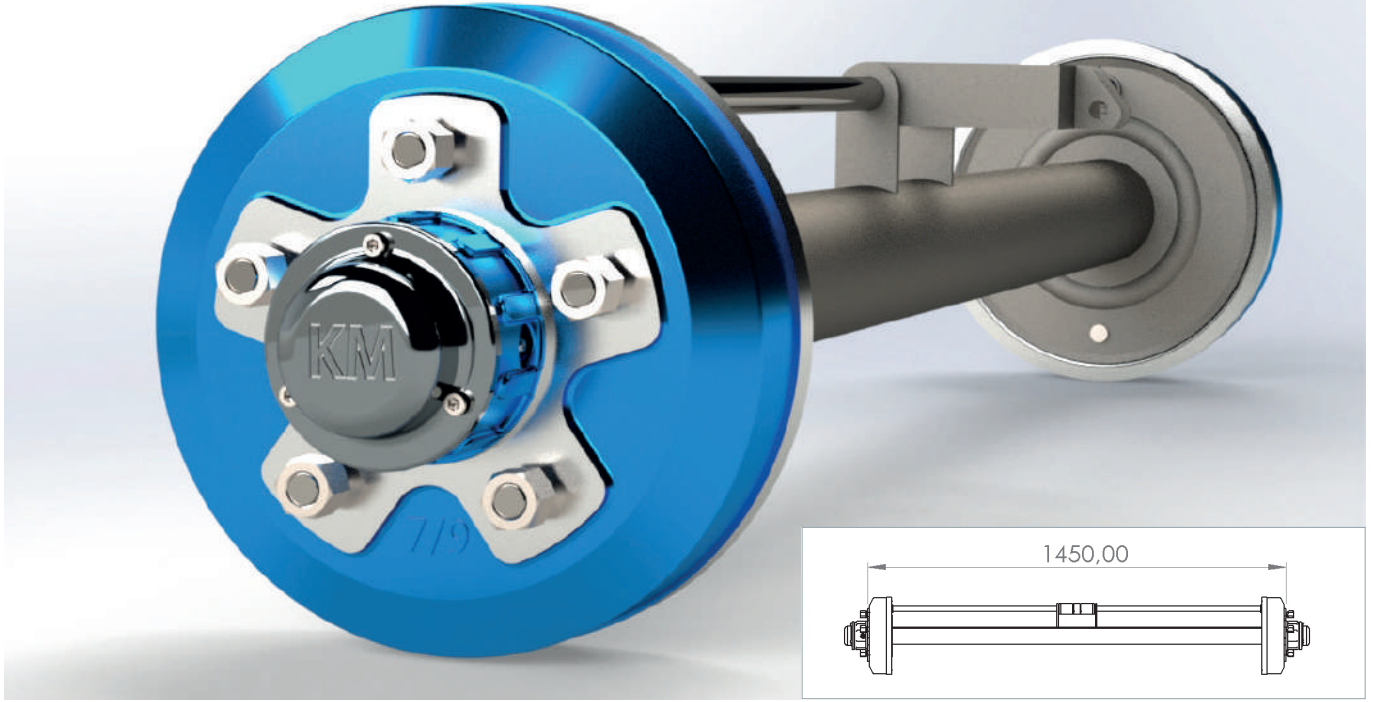
## FRENLİ DİNGİLLER (PROFİL)



SİPARİŞ NO	RULMAN ÖLÇÜSÜ	PROFİL	BİJON	BALATA	JANT GÖBEĞİ A	BİJON GÖBEĞİ B	KAPASİTE A	KAPASİTE B	KAPASİTE C	İZ BOYU D
KLC-12400	30207*30209	70	5	260*50	160	205	2750	3000	2600	1.450
KLC-12401	32207*32209	70	5	260*50	160	205	2750	3000	2600	1.450
KLC-12402	30208*30210	80	6	300*60	160	205	3500	4000	3300	1.550
KLC-12403	30208*30210	80	6	300*60	160	205	3750	4250	3500	1.550
KLC-12404	30209*30211	90	6	300*60	160	205	5000	5500	4800	1.550
KLC-12405	32209*32211	100	6	300*60	160	205	5250	5750	5000	1.550
KLC-12406	32210*32212	100	6	300*60	160	205	6000	6500	5800	1.550
KLC-12407	32211*32213	100	6	300*60	160	205	6500	7000	6250	1.650
KLC-12408	32211*32213	120	6	300*60	160	205	7000	7250	6250	1.650
KLC-12409	32210*32212	100	8	300*90	220	275	6500	7000	6250	1.550
KLC-12410	32211*32213	100	8	300*90	220	275	7500	8000	7000	1.650
KLC-12411	32213*32217	120	10	400*80	280	335	10000	10500	9800	1.950

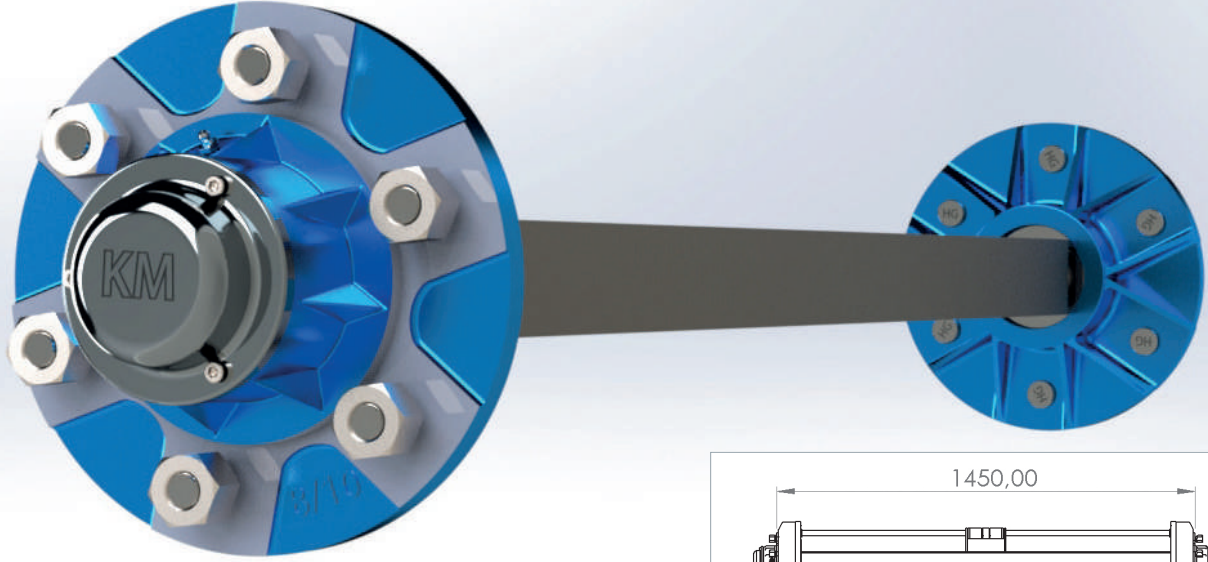


## FRENLİ DİNGİLLER (BORU)



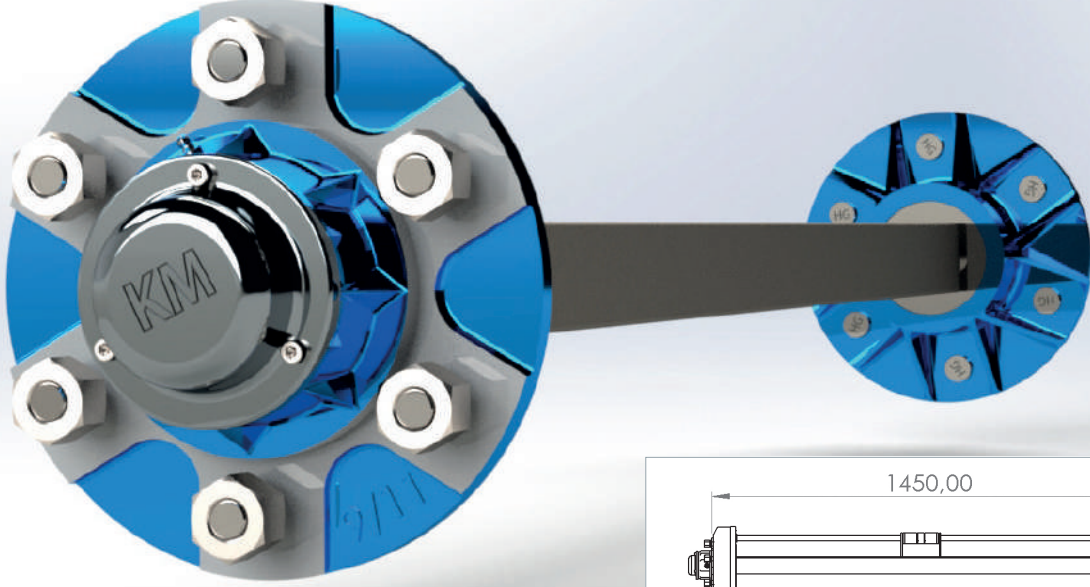
SİPARİŞ NO	RULMAN ÖLÇÜSÜ	BORU	BİJON	BALATA	JANT GÖBEĞİ A	BİJON GÖBEĞİ B	KAPASİTE A	KAPASİTE B	KAPASİTE C	İZ BOYU D
KLC-12500	30207*30209	3"	5	260*50	110	160	2500	2750	2400	1.450
KLC-12501	32207*32209	4"	5	260*50	110	160	2600	2750	2400	1.450
KLC-12502	30208*30210	4"	6	300*60	160	205	3250	3750	3000	1.550
KLC-12503	30208*30210	4"	6	300*60	160	205	3250	3750	3000	1.550
KLC-12504	30209*30211	4"	6	300*60	160	205	4750	5250	500	1.550
KLC-12505	32209*32211	4"	6	300*60	160	205	4750	5250	4500	1.550
KLC-12506	32210*32212	5"	6	300*60	160	205	5750	6250	5500	1.550

## FRENSİZ DİNGİLLER (KARE)



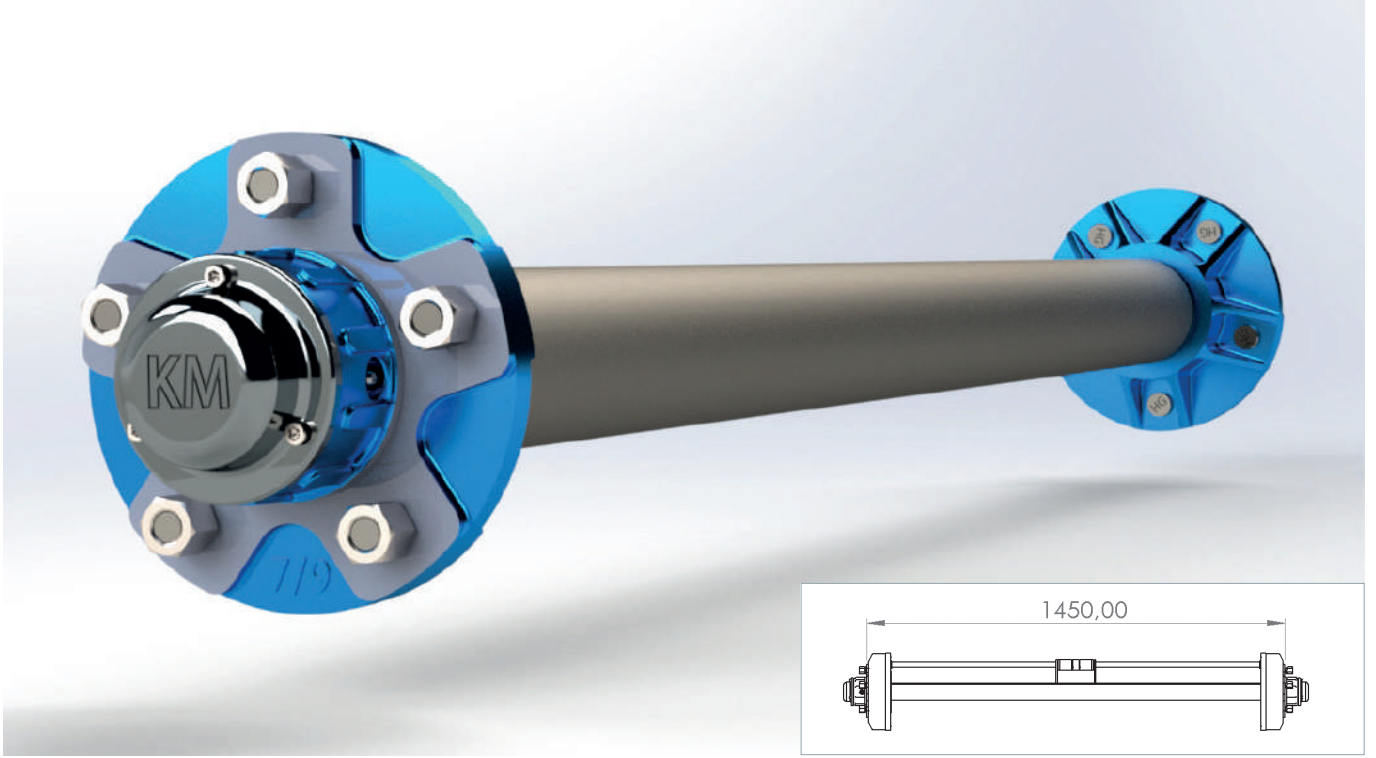
SİPARİŞ NO	RULMAN ÖLÇÜSÜ	KARE	BİJON	JANT GÖBEĞİ	BİJON ÇAPREĞİ	KAPASİTE	KAPASİTE	KAPASİTE	İZ BAYI
				A	B	A	B	C	D
KLC-12700	30204*30205	30	3*4	58	98*149	700	900	600	1.250
KLC-12701	30204*30205	40	4	58	98	800	1000	700	1.250
KLC-12702	30205*30207	40	5	66	112	950	1150	850	1.250
KLC-12703	30206*30207	40	5	94	140	1400	1600	1200	1.450
KLC-12704	30206*30208	50	5	110	160	1800	2000	1700	1.450
KLC-12705	30207*30209	50	5	110	160	2750	3000	2600	1.450
KLC-12706	32207*32209	55	5	110	160	3000	3250	2900	1.450
KLC-12707	30208*30210	60	6	160	205	3500	4000	3300	1.550
KLC-12708	32208*32210	65	6	160	205	4250	4750	4000	1.550
KLC-12709	30209*30211	60	6	160	205	4500	5000	4300	1.550
KLC-12710	32209*32211	65	6	160	205	4750	5250	4500	1.550
KLC-12711	32209*32211	70	6	160	205	5000	5500	4800	1.550
KLC-12712	32210*32212	70	6	160	205	5500	6000	5300	1.550
KLC-12713	32210*32212	80	6	160	205	6000	6500	5800	1.550
KLC-12714	32211*32213	80	6	160	205	7000	7500	6750	1.650
KLC-12715	32211*32213	100	6	160	205	7500	8000	7000	1.650
KLC-12716	32210*32212	80	8	220	275	7500	8000	7300	1.650
KLC-12717	32210*32212	100	8	220	275	8000	8500	7800	1.650
KLC-12718	32211*32213	80	8	220	275	7500	9000	8300	1.650
KLC-12719	32211*32213	100	8	220	275	9000	9500	9300	1.650
KLC-12720	32213*32217	100	10	280	335	9500	10000	9800	1.950
KLC-12721	32213*32217	100	10	280	335	8000	8500	7800	1.950

## FRENSİZ DİNGİLLER (KÖŞEBENT)



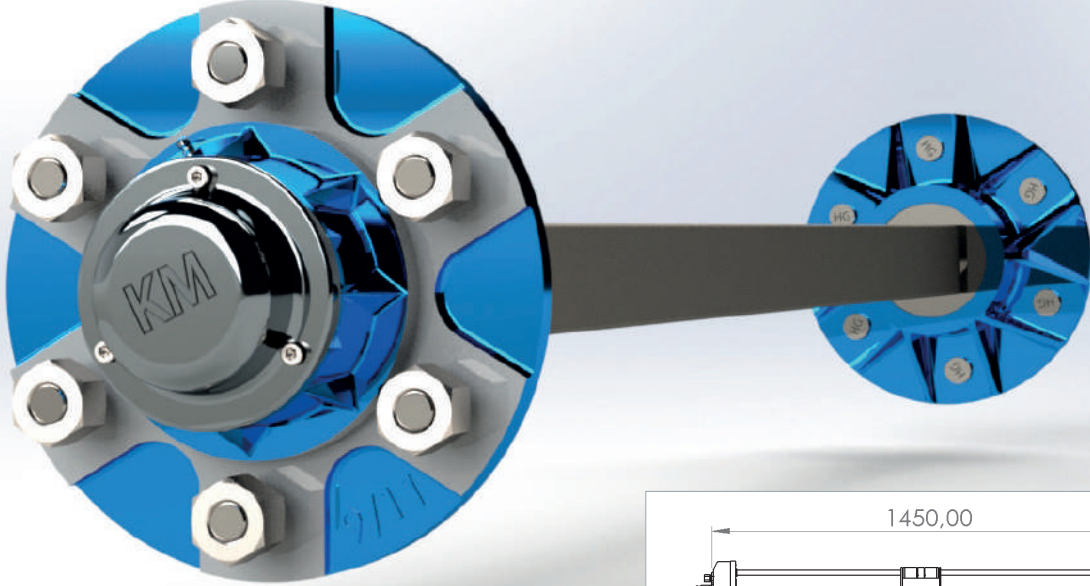
SİPARİŞ NO	RULMAN ÖLÇÜSÜ	KÖŞE BENT	BİJON	JANT GÖBEĞİ A	BİJON GÖBEĞİ B	KAPASİTE A	KAPASİTE B	KAPASİTE C	İZ BOYU D
KLC-12800	30204*30205	40	3*4	58	98*149	700	900	600	1.250
KLC-12801	30204*30205	40	4	58	98	800	1000	700	1.250
KLC-12802	30205*30207	40	5	66	112	950	1150	850	1.250
KLC-12803	30206*30207	40	5	94	140	1400	1600	1200	1.450
KLC-12804	30206*30207	50	5	110	160	1800	2000	1700	1.450
KLC-12805	30207*30209	60	5	110	160	2500	2750	2400	1.450
KLC-12806	32207*32209	70	5	110	160	2750	3000	2600	1.450
KLC-12807	30208*30210	70	6	160	205	3500	4000	3300	1.550
KLC-12808	32208*32210	80	6	160	205	4000	4500	3800	1.550
KLC-12809	30209*30211	70	6	160	205	4500	5000	4300	1.550
KLC-12810	32209*32211	80	6	160	205	4750	5250	4500	1.550
KLC-12811	32210*32212	80	6	160	205	6000	6500	5800	1.550
KLC-12812	32210*32212	100	6	160	205	6500	7000	6300	1.550
KLC-12813	32211*32213	80	6	160	205	7000	7500	6750	1.650
KLC-12814	32211*32213	100	6	160	205	7500	8000	7000	1.650
KLC-12815	32210*32212	80	8	220	275	7500	8000	7000	1.650
KLC-12816	32210*32212	100	8	220	275	8000	8500	7800	1.650
KLC-12817	32211*32213	80	8	220	275	8300	8800	8000	1.650
KLC-12818	32211*32213	100	8	220	275	8500	9000	8300	1.650
KLC-12819	32213*32217	120	10	280	335	9500	10000	9800	1.950

## FRENSİZ DİNGİLLER (BORU)



SİPARİŞ NO	RULMAN ÖLÇÜSÜ	BORU	BİJON	JANT GÖBEĞİ A	BİJON GÖBEĞİ B	KAPASİTE A	KAPASİTE B	KAPASİTE C	İZ BOYU D
KLC-12900	30207*30209	3"	5	110	160	2500	2750	2400	1.450
KLC-12901	32207*32209	4"	5	110	160	2500	2570	2400	1.450
KLC-12902	30208*30210	4"	6	160	205	3250	3750	3000	1.550
KLC-12903	32208*32210	4"	6	160	205	3250	3750	3000	1.550
KLC-12904	30209*30211	4"	6	160	205	2750	5250	4500	1.550
KLC-12905	32209*32211	4"	6	160	205	2750	5250	4500	1.550
KLC-12906	32210*32212	5"	6	160	205	5750	6250	5500	1.550

## FRENSİZ DİNGİLLER (PROFİL)

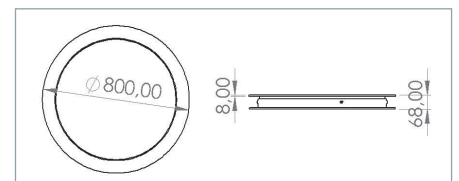


SİPARİŞ NO	RULMAN ÖLÇÜSÜ	PROFİL	BİJON	JANT GÖBEĞİ A	BİJON GÖBEĞİ B	KAPASİTE A	KAPASİTE B	KAPASİTE C	İZ BOYU D
KLC-13100	30207*30209	70	5	160	205	2750	3000	2600	1.450
KLC-13101	32207*32209	70	5	160	205	3000	3250	2800	1.450
KLC-13102	30208*30210	80	6	160	205	3500	4000	3300	1.550
KLC-13103	32208*32210	80	6	160	205	3750	4250	3500	1.550
KLC-13104	30209*30211	90	6	160	205	5000	5500	4800	1.550
KLC-13105	32209-32211	100	6	160	205	5250	5750	5000	1.550
KLC-13106	32210*32212	100	6	160	205	6000	6500	5800	1.550
KLC-13107	32211*32213	100	6	160	205	7500	8000	7000	1.650
KLC-13108	32211*32213	120	6	160	205	8000	8500	7500	1.650
KLC-13109	32210*32212	100	8	220	275	8000	8500	7800	1.550
KLC-13110	32211*32213	100	8	220	275	8500	9000	8300	1.650
KLC-13111	32213*32217	120	10	280	335	11500	12500	10500	1.950

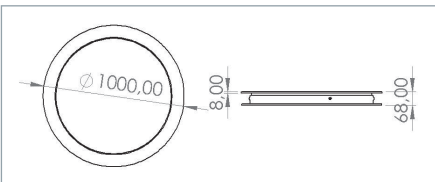


## RÖMORK DÖNER U TİPİ (LAMA)

SİPARİŞ NO	DÖNER ÇAPI A cm	YÜKSEKLİK H mm	BİLYA J Ø	KAPASİTE kg
KLC-13200	30	55	Ø 12.7	400
KLC-13201	40	55	Ø 12.7	700
KLC-13202	50	55	Ø 12.7	1000
KLC-13203	60	65	Ø 12.7	2500
KLC-13204	70	65	Ø 12.7	300
KLC-13205	80	65	Ø 12.7	3500
KLC-13206	90	65	Ø 12.7	6000
KLC-13207	100	65	Ø 12.7	7500
KLC-13208	110	65	Ø 12.7	12000
KLC-13209	120	65	Ø 14.0	14000
KLC-13210	130	65	Ø 14.0	16000
KLC-13211	90	80	Ø 16.0	7000
KLC-13212	100	80	Ø 16.0	9000
KLC-13213	110	80	Ø 16.0	12500
KLC-13214	120	80	Ø 16.0	15000
KLC-13215	100	90	Ø 20.0	10000
KLC-13216	110	90	Ø 20.0	14500
KLC-13217	120	90	Ø 20.0	17500
KLC-13218	110	90	Ø 22.0	17500
KLC-13219	120	90	Ø 22.0	20000



## RÖMORK DÖNER U TİPİ (KÖŞEBENT)



SİPARİŞ NO	DÖNER ÇAPI A cm	YÜKSEKLİK H mm	BİLYA J Ø	KAPASİTE kg
KLC-13300	30	65	Ø 12.7	400
KLC-13301	40	65	Ø 12.7	700
KLC-13302	50	65	Ø 12.7	850
KLC-13303	60	65	Ø 12.7	1000
KLC-13304	70	65	Ø 12.7	1250
KLC-13305	80	65	Ø 12.7	2000
KLC-13306	90	65	Ø 12.7	4000
KLC-13307	100	65	Ø 12.7	5000
KLC-13308	110	65	Ø 12.7	8000
KLC-13309	120	65	Ø 12.7	10000

## RÖMORK DÖNER Z TİPİ (LAMA)

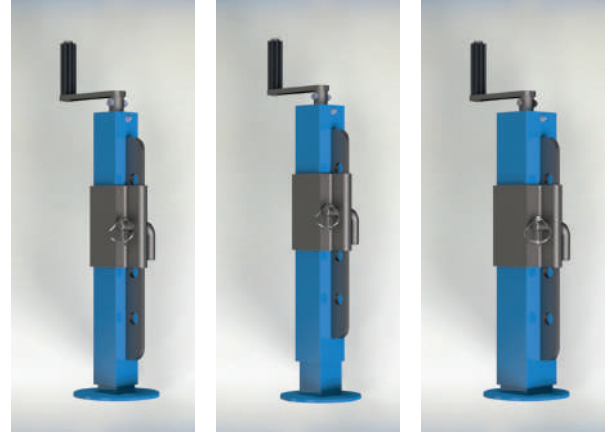
SİPARİŞ NO	DÖNER ÇAPI A cm	YÜKSEKLİK H mm	BİLYA J Ø	KAPASİTE kg
KLC-13400	30	45	Ø 12.7	400
KLC-13401	40	45	Ø 12.7	700
KLC-13402	50	45	Ø 12.7	1000
KLC-13403	60	65	Ø 12.7	2000
KLC-13404	70	65	Ø 12.7	2500
KLC-13405	80	65	Ø 12.7	3000
KLC-13406	90	65	Ø 12.7	5000
KLC-13407	100	65	Ø 12.7	6000
KLC-13408	110	65	Ø 12.7	10000
KLC-13409	120	65	Ø 12.7	12000

## DÜZ KRİKO



SİPARİŞ NO	ÜRÜN ADI	DIŞ PROFİL A mm	İÇ PROFİL B mm	KAPALI BOY C mm	KAPASİTE Kg
KLC-26600	Ekonomik Düz	60	50	500	2,500
KLC-26601	Tanker Düz	70	60	500	3,000
KLC-26602	Römork Düz	80	70	500	3,500

## AYARLI KRİKO



SİPARİŞ NO	ÜRÜN ADI	DIŞ PROFİL A mm	İÇ PROFİL B mm	KAPALI BOY C mm	KAPASİTE Kg
KLC-26700	Ekonomik Ayarlı	60	50	500	2,500
KLC-26701	Tanker Ayarlı	70	60	500	3,000
KLC-26702	Römork Ayarlı	80	70	500	3,500

## ŞANZUMANLI AYARLI KRİKO



SİPARİŞ NO	PROFİL	KAPALI BOY	KAPASİTE Kg
KLC-27000	70X70	550	5,000

## ŞANZUMANLI AYARLI KRİKO



SİPARİŞ NO	PROFİL	KAPALI BOY	KAPASİTE Kg
KLC-26800	80X80	550	5,000

**ŞANZUMANLI AYARLI KRİKO**

SİPARİŞ NO	PROFİL	KAPALI BOY	KAPASİTE Kg
KLC-27200	100X100	550	7,500

**TEKERLEKLI İLAÇLAMA KRİKO**

SİPARİŞ NO	BORU ÇAPI	KAPALI BOY	KAPASİTE Kg
KLC-27700	Ø 50	350	2,000

## JANTLAR



SİPARİŞ NO	JANT EBADI	UYGUN LASTİK	TİPİ	ÖZELLİK	BIJON SAYISI B	PORYA GÖBEĞİ D	BIJON MERKEZİ C	DIŞ ÇAP A	GENİŞLİK E	GÖBEK KALINLIĞI	KASNAK KALINLIĞI
KLC-14900	2.00x8	4.00-8	Levyeli / Zirai	İç Lastik ve Dublex	4	58	98	203	64	4	2
KLC-14901	2.50x8	4.00-8	Parçalı / Zirai	İç Lastik ve Dublex	4	58	98	203	64	2	2
KLC-14902	2.50x8	4.00-8	Parçalı / Zirai	İç Lastik ve Dublex	4	52	95	203	63	4	2
KLC-14903	5.00x8	16.5x6.50-8	Levyeli / Zirai	İç Lastik	4	58	98	203	127	4	2
KLC-14904	4.00x10	5.00-10	Levyeli / Zirai	İç Lastik	4	58	98	254	102	4	2.5
KLC-14905	4.00x10	5.00-10	Levyeli / Zirai	İç Lastik	4	52	98	254	102	4	2.5
KLC-14906	5.00x10	6.50-10	Çift Sekman / Zirai	İç Lastik	5	110	160	254	127	6	4
KLC-14907	5.50x12	7.00-12	Çift Sekman / Zirai	İç Lastik	5	110	160	305	140	6	4
KLC-14908	5.50x12	7.00-12	Çift Sekman / Zirai	İç Lastik	6	160	205	305	140	6	4
KLC-14909	5.50x12	7.00-12	Çift Sekman Bombeli / Zirai	İç Lastik	6	160	205	305	140	6	4
KLC-14910	8.00x12	10.0/80-12	Levyeli / Zirai	Dubleks	5	110	160	305	203	6	4
KLC-14911	4.00x12	5.00-12	Levyeli / Zirai	İç Lastik	4	58	98	305	102	4	3
KLC-14912	5.50x12	6.50/80-12	Levyeli / Zirai	İç Lastik	4	52	95	305	140	4	3
KLC-14913	5.50x12	6.50/80-12	Levyeli / Zirai	İç Lastik	4	72	98	305	140	4	3
KLC-14914	4.50x13	165/80 R13	Levyeli / Otomotiv	Dubleks	4	58	98	330	114	4	3
KLC-14915	4.50x13	165/80 R13	Levyeli / Otomotiv	Dubleks	5	66	112	330	114	4	3
KLC-14916	4.00x13	165/80 R13	Levyeli / Zirai	Dubleks	4	58	98	330	102	4	3
KLC-14917	4.00x13	165/80 R13	Levyeli / Zirai	Dubleks	5	110	140	330	102	4	3
KLC-14918	5.50x14	185/65 R14	Levyeli / Otomotiv	Dubleks	4	58	98	356	140	4	3
KLC-14919	5.00x14	185/65 R14	Levyeli / Otomotiv	Dubleks	5	66	112	356	127	4	3
KLC-14920	5.50x14	185/65 R14	Levyeli / Zirai	Dubleks	4	58	98	356	140	4	3
KLC-14921	4.00x14	185/65 R14	Levyeli / Zirai	Dubleks	5	110	160	356	102	4	3
KLC-14922	5.50x14	185/65 R14	Levyeli / Zirai	Dubleks	5	110	160	356	140	4	3
KLC-14923	7.00x15	225/70 R15	Levyeli / Zirai	Dubleks	5	110	160	381	178	7	4
KLC-14924	7.00x15	225/70 R15	Levyeli / Zirai	Dubleks	6	160	205	381	178	7	4

## JANTLAR



SİPARİŞ NO	JANT EBADI	UYGUN LASTİK	TİPİ	ÖZELLİK	BİJON SAYISI B	PORYA GÖBEĞİ D	BİJON MERKEZİ C	DIŞ ÇAP A	GENİŞLİK E	GÖBEK KALINLIĞI	KASNAK KALINLIĞI
KLC-15000	7.00x15	8.15-15	Çift Sekman / Zirai	İç Lastikli	6	160	205	381	178	7	4
KLC-15001	7.00x15	8.15-15	Çift Sekman / Zirai	İç Lastikli	6	160	205	384	178	10	4
KLC-15002	5.50x15	195/65 R15	Levyeli / Otomotiv	Dubleks	4	58	98	384	140	4	3
KLC-15003	9.00x15.3	10.0/75-15.3	Levyeli / Zirai	Dubleks	5	110	160	389	229	7	4
KLC-15004	9.00x15.3	11.5/80-15.3	Levyeli / Zirai	Dubleks	6	160	205	389	229	7	4
KLC-15005	9.00x15.3	12.5/80-15.3	Levyeli / Zirai	Dubleks	6	160	205	389	242	7	5
KLC-15006	9.00x15.3	12.5/80-15.3	Levyeli / Zirai	Dubleks	6	160	205	389	254	7	4
KLC-15007	10.00x15.3	12.5/80-15.3	Levyeli / Zirai	Dubleks	6	160	205	389	254	10	5
KLC-15008	10.00x15.3	4.00/60-15.3	Levyeli / Zirai	Dubleks	6	160	205	394	330	8	5
KLC-15009	13.00x15.5	6.00-16	Levyeli / Zirai	İç Lastikli	5	110	160	406	102	5	3
KLC-15010	4.00x16	6.00-16	Levyeli / Zirai	İç Lastikli	5	110	140	406	102	5	3
KLC-15011	4.00x16	6.00-16	Levyeli / Zirai	İç Lastikli	-	110	-	406	102	5	3
KLC-15012	4.00x16	6.00-16	Levyeli / Bombeli	İç Lastikli	-	72	-	406	102	5	3
KLC-15013	4.00x16	6.00-16	Levyeli / Bombeli	İç Lastikli	-	110	-	406	102	5	3
KLC-15014	4.00x16	6.00-16	Levyeli / Zirai	İç Lastikli	5	110	160	406	115	5	3
KLC-15015	4.50x16	6.00-16	Levyeli / Zirai	İç Lastikli	5	110	140	406	115	5	3
KLC-15016	4.50x16	6.00-16	Levyeli / Zirai	İç Lastikli	-	110	-	406	115	5	3
KLC-15017	4.50x16	6.00-16	Levyeli / Zirai	İç Lastikli	-	110	-	406	115	7	3
KLC-15018	4.50x16	6.00-16	Levyeli / Zirai	İç Lastikli	-	72	-	406	115	7	3
KLC-15019	4.50x16	6.00-16	Tek Sekman / Zirai	İç Lastikli	5	110	160	406	115	6	4
KLC-15020	4.50x16	6.00-16	Tek Sekman / Zirai	İç Lastikli	5	110	140	406	115	6	4
KLC-15021	4.50x16	6.00-16	Tek Sekman / Zirai	İç Lastikli	-	110	-	406	115	6	4
KLC-15022	5.00x16	7.50-16	Levyeli / Zirai	İç Lastikli	5	110	160	406	127	6	4
KLC-15023	5.00x16	7.50-16	Levyeli / Zirai	İç Lastikli	5	110	140	406	127	6	4
KLC-15024	5.00x16	7.50-16	Levyeli / Zirai	İç Lastikli	-	110	-	406	127	6	4
KLC-15025	5.00x16	7.50-16	Levyeli / Zirai	İç Lastikli	6	160	205	406	127	6	4



## JANTLAR



SİPARİŞ NO	JANT EBADI	UYGUN LASTİK	TİPİ	ÖZELLİK	BIJON SAYISI B	PORYA GÖBEĞİ D	BIJON MERKEZİ C	DIŞ ÇAP A	GENİŞLİK E	GÖBEK KALINLIĞI	KASNAK KALINLIĞI
KLC-15100	5.50x16	7.50-16	Çift Sekman / Zirai	İç Lastıklı	5	110	160	406	140	7	5
KLC-15101	5.50x16	7.50-16	Çift Sekman / Zirai	İç Lastıklı	-	110	-	406	140	7	5
KLC-15102	5.50x16	7.50-16	Çift Sekman / Zirai	İç Lastıklı	6	160	205	406	140	7	5
KLC-15103	5.50x16	7.50-16	Çift Sekman / Zirai	İç Lastıklı	-	160	-	406	140	7	5
KLC-15104	5.50x16	7.50-16	Çift Sekman / Zirai	İç Lastıklı	-	100	-	406	140	7	5
KLC-15105	5.50x16	7.50-16	Çift Sekman / Zirai	İç Lastıklı	-	-	-	406	140	7	5
KLC-15106	5.50x16	7.50-16	Tek Sekman / Zirai	İç Lastıklı	5	110	160	406	140	7	5
KLC-15107	5.50x16	7.50-16	Tek Sekman / Zirai	İç Lastıklı	-	110	-	406	140	7	5
KLC-15108	5.50x16	7.50-16	Tek Sekman / Zirai	İç Lastıklı	6	160	205	406	140	7	5
KLC-15109	5.50x16	7.50-16	Tek Sekman / Zirai	İç Lastıklı	-	160	-	406	140	7	5
KLC-15110	5.50x16	7.50-16	Tek Sekman / Zirai	İç Lastıklı	-	-	-	406	140	7	5
KLC-15111	5.50x16	7.50-16	Çift Sekman / Bombeli / Zirai	İç Lastıklı	6	160	205	406	140	7	5
KLC-15112	5.50x16	7.50-16	Çift Sekman / Bombeli / Zirai	İç Lastıklı	5	110	160	406	140	7	5
KLC-15113	7.00x16	9.00-16	Çift Sekman / Zirai	İç Lastıklı	5	110	160	406	178	7	5
KLC-15114	7.00x16	9.00-16	Çift Sekman / Zirai	İç Lastıklı	-	110	-	406	178	7	5
KLC-15115	7.00x16	9.00-16	Çift Sekman / Zirai	İç Lastıklı	6	160	205	406	178	7	5
KLC-15116	7.00x16	9.00-16	Çift Sekman / Zirai	İç Lastıklı	-	160	-	406	178	7	5
KLC-15117	7.00x16	9.00-16	Çift Sekman / Zirai	İç Lastıklı	-	-	-	406	178	7	5
KLC-15118	7.00x16	9.00-16	Çift Sekman / Zirai	İç Lastıklı	6	160	205	406	178	10	5
KLC-15119	7.00x16	9.00-16	Çift Sekman / Zirai	İç Lastıklı	8	221	275	406	178	10	5
KLC-15120	6.50x16	9.00-16	Sekmansız / Zirai	Dubleks	6	160	205	406	165	7	5
KLC-15121	7.00x16	9.00-16	Çift Sekman / Bombeli / Zirai	İç Lastıklı	6	160	205	406	178	7	5
KLC-15122	7.00x16	9.00-16	Tek Sekman / Zirai	İç Lastıklı	-	110	-	406	178	7	5
KLC-15123	7.00x16	9.00-16	Tek Sekman / Zirai	İç Lastıklı	6	160	205	406	178	7	5
KLC-15124	7.00x16	9.00-16	Tek Sekman / Zirai	İç Lastıklı	-	160	-	406	178	7	5
KLC-15125	7.00x16	9.00-16	Tek Sekman / Zirai	İç Lastıklı	-	-	-	406	178	7	5

## JANTLAR



SİPARİŞ NO	JANT EBADI	UYGUN LASTİK	TİPİ	ÖZELLİK	BIJON SAYISI B	PORYA GÖBEĞİ D	BIJON MERKEZİ C	DIŞ ÇAP A	GENİŞLİK E	GÖBEK KALINLIĞI	KASNAK KALINLIĞI
KLC-15200	13.00x17	15.0/55-17	Levyeli / Zirai	Dubleks	6	160	205	432	330	10	5
KLC-15201	16.00x17	"5.00/50-17 19.0/45-17"	Levyeli / Zirai	Dubleks	6	160	205	432	407	10	5
KLC-15202	6.75x17.5	"245/75 R17.5"	Levyeli / Zirai	Dubleks	6	160	205	445	172	10	5
KLC-15203	9.00x18	12.5/80-18	Levyeli / Zirai	Dubleks	6	160	205	457	229	10	5
KLC-15204	13.00x18	15.0/70-18	Levyeli / Zirai	Dubleks	8	221	275	457	330	10	5
KLC-15205	11.00x18	13.0/65-18	Levyeli / Zirai	Dubleks	6	160	205	457	280	10	5
KLC-15206	7.50x19.5	"285/70 R 19.5"	Levyeli / Zirai	Dubleks	6	160	205	495	191	10	5
KLC-15207	14.00x19.5	"435/50 R19.5"	Levyeli / Zirai	Dubleks	10	281	335	495	256	10	6
KLC-15208	7.50x19.5	"285/70 R 19.5"	Levyeli / Zirai	Dubleks	8	221	275	495	191	10	5
KLC-15209	5.50x20	"8.25-20 7.50-20"	Çift Sekman / Zirai	İç Lastikli	6	160	205	508	140	7	5
KLC-15210	7.00x20	9.00-20	Çift Sekman / Zirai	İç Lastikli	6	160	205	508	178	7	5
KLC-15211	7.00x20	9.00-20	Çift Sekman / Zirai	İç Lastikli	6	160	-	508	178	7	5
KLC-15212	7.00x20	9.00-20	Çift Sekman / Zirai	İç Lastikli	8	221	275	508	178	7	5
KLC-15213	7.00x20	900-20	Tek Sekman / Zirai	İç Lastikli	6	160	205	508	178	7	5
KLC-15214	7.00x20	900-20	Tek Sekman / Zirai	İç Lastikli	-	160	-	508	178	7	5
KLC-15215	7.00x20	900-20	Tek Sekman / Zirai	İç Lastikli	6	160	205	508	178	10	5
KLC-15216	7.00x20	9.00-20	Bombeli / Çift Sekman / Zirai	İç Lastikli	6	160	205	508	178	7	5
KLC-15217	7.00x20	9.00-20	Bombeli / Çift Sekman / Zirai	İç Lastikli	-	160	-	508	178	7	5
KLC-15218	7.00x20	9.00-20	Bombeli / Çift Sekman / Zirai	İç Lastikli	8	221	275	508	178	7	5
KLC-15219	15.00x22.5	500/50-22.5	Levyeli / Zirai	Dubleks	10	280	335	572	381	10	6
KLC-15220	20.00x22.5	600/50-22.5	Levyeli / Zirai	Dubleks	10	281	335	572	508	15	6
KLC-15221	11.75x22.5	385/65 R 22.5	Levyeli / Zirai	Dubleks	10	281	335	572	298	15	6
KLC-15222	16.00x22.5	550/60-22.5	Levyeli / Zirai	Dubleks	10	281	335	572	406	15	6
KLC-15223	9.00x22.5	315/80 R 22.5	Bombeli / Sek- mansız / Zirai	Dubleks	10	281	335	572	229	10	6
KLC-15224	11.75x22.5	385/65 R 22.5	Levyeli / Zirai	Dubleks	8	221	275	572	298	10	6
KLC-15225	7x32	230/95 R 32	Levyeli / Zirai	Dubleks	8	-	-	813	178	10	6

## LASTİKLER



SİPARİŞ NO	LASTİK EBADI	UYGUN JANT	MARKA	TİP	KAT	MODEL	GENİŞLİK	DIŞ ÇAP	YÜK (kg)	HIZ	GRUP
KLC-15300	335/75	2.50x7	Yerli	Dolgu	-	Düz	75	335	200	10	Zirai
KLC-15301	335/75	2.50x7	Yerli	Dolgu	-	Düz	75	335	200	10	Zirai
KLC-15302	4.00/8	2.00x8-2.50x8	Billas	İç Lastikli	4	PA 30	102	400	300	25	Zirai
KLC-15303	4.00/8	2.00x8-2.50x8	Anlaş	Dubleks	4	DÜZ	102	400	300	25	Zirai
KLC-15304	4.00/8	2.00x8-2.50x8	Anlaş	İç Lastikli	4	Düz	102	400	300	25	Zirai
KLC-15305	4.00/8	2.00x8-2.50x8	Anlaş-Sava	İç Lastikli	4	TA	102	400	300	25	Zirai
KLC-15306	16.5/6.50-8	5.00x8	Sava	Dubleks	4	TA	165	418	400	25	Zirai
KLC-15307	16.5/6.50-8	5.00x8	Maxxis	Dubleks	8	UN1	165	418	400	25	Zirai
KLC-15308	16.5/6.50-8	5.00x8	Sava	Dubleks	10	OL	165	418	400	25	Zirai
KLC-15309	16.5/6.50-8	5.00x8	Sava	İç Lastikli	10	OL	165	418	400	25	Zirai
KLC-15310	16.5/6.50-8	5.00x8	Anlaş	İç Lastikli	6	OL	165	418	350	25	Zirai
KLC-15311	6.00/9	4.00x9	Petlas	İç Lastikli	12	HL 10	152	519	1450	25	Zirai
KLC-15312	6.50/10	5.00x10	Petlas	İç Lastikli	12	HL 10	165	568	1650	25	Zirai
KLC-15313	7.00/12	5.00x12	Petlas	İç Lastikli	14	HL 10	178	643	2120	25	Zirai
KLC-15314	5.00/12	4.50x12	Anlaş-Sava	İç Lastikli	4	TA	127	546	265	30	Zirai
KLC-15315	6.50/80-12	5.50x12	Anlaş-Sava	İç Lastikli	4	TA	165	659	450	30	Zirai
KLC-15316	5.00/10	4.50x10	Anlaş-Sava	İç Lastikli	4	TA	127	495	335	30	Zirai
KLC-15317	10.0/80-12	8.00x12	Petlas	İç Lastikli	10	UNS	254	712	1500	40	Zirai
KLC-15318	10.0/80-12	8.00x12	Petlas	İç Lastikli	6	TA	254	712	750	30	Zirai
KLC-15519	10.0/75-15.3	9.00x15.3	Petlas	Dubleks	12	UN1	292	856	2180	40	Zirai
KLC-15520	10.0/75-15.3	9.00x15.3	Özka	Dubleks	14	KNK 48	292	856	2180	40	Zirai
KLC-15521	10.0/75-15.3	9.00x15.3	Özka	Dubleks	14	TA	292	856	2180	40	Zirai

## LASTİKLER



SİPARİŞ NO	LASTİK EBADI	UYGUN JANT	MARKA	TİP	KAT	MODEL	GENİŞLİK	DIŞ ÇAP	YÜK (kg)	HIZ	GRUP
KLC-15400	165/13	4.50x13	Kaplama	İç Lastikli	-	TA	165	695	450	40	Zirai
KLC-15401	165/80 R 13	4.50x13	Petlas	Dubleks	-	Düz	165	695	487	190	Radyal
KLC-15402	6.50/80-13	4.50x13	Anlaş	İç Lastikli	6	TA	165	595	487	40	Zirai
KLC-15403	175/70 R 13	4.50x13	Petlas	Dubleks	-	Düz	175	595	487	190	Radyal
KLC-15404	185 R 14 C	5.50x14	Petlas	Dubleks	8	Düz	185	659	850	190	Radyal
KLC-15405	185/65 R14	5.50x14	Petlas	Dubleks	-	Düz	185	597	530	190	Radyal
KLC-15406	175/65 R14	4.50x14	Petlas	Dubleks	-	Düz	175	583	475	190	Radyal
KLC-15407	195 R 14C	4.50x14	Petlas	Dubleks	8	Düz	195	680	900	190	Radyal
KLC-15408	185/65 R15	5.50x14	Petlas	Dubleks	-	Düz	185	621	560	190	Radyal
KLC-15409	195/65 R15	7.00x15	Petlas	Dubleks	-	Düz	195	635	615	210	Radyal
KLC-15410	235/75 R15	7.00x15	Toyo	Dubleks	-	Düz	235	735	715	210	Radyal
KLC-15411	225/70 R15C	7.00x15	Petlas	Dubleks	8	Düz	225	696	1120	170	Radyal
KLC-15412	8.15-15	7.00x15	Petlas	İç Lastikli	14	HL 10	208	774	3000	25	Zirai
KLC-15413	8.25-15	7.00x15	Petlas	İç Lastikli	14	HL 10	210	779	3250	25	Zirai
KLC-15414	10.00/16	7.00x15	Petlas	İç Lastikli	8	TD 17	251	889	1180	30	Zirai
KLC-15415	10.0/75-15.3	9.00x15.3	Petlas	Dubleks	12	UN1	251	770	1550	40	Zirai
KLC-15416	10.0/75-15.3	9.00x15.3	Petlas	Dubleks	12	UN1	251	770	1700	40	Zirai
KLC-15417	10.0/75-15.3	9.00x15.3	Özka	Dubleks	12	KNK 48	251	770	1700	40	Zirai
KLC-15418	10.0/75-15.3	9.00x15.3	Petlas	Dubleks	12	TA	251	770	1700	40	Zirai
KLC-15419	10.0/75-15.3	9.00x15.3	Petlas	Dubleks	12	UN1	292	856	2180	40	Zirai
KLC-15420	10.0/75-15.3	9.00x15.3	Özka	Dubleks	14	KNK 48	292	856	2180	40	Zirai
KLC-15421	10.0/75-15.3	9.00x15.3	Özka	Dubleks	14	TA	292	856	2180	40	Zirai

## LASTİKLER



SİPARİŞ NO	LASTİK EBADI	UYGUN JANT	MARKA	TİP	KAT	MODEL	GENİŞLİK	DIŞ ÇAP	YÜK (kg)	HIZ	GRUP
KLC-15500	12.5/80-15.3	9.50x15.3	Petlas	Dubleks	12	UN1	318	897	2430	40	Zirai
KLC-15501	12.5/80-15.3	9.50x15.3	Petlas	Dubleks	16	IMF18	318	897	2800	40	Zirai
KLC-15502	12.5/80-15.3	9.50x15.3	Petlas	Dubleks	16	UN3	318	897	2800	40	Zirai
KLC-15503	12.5/80-15.3	9.50x15.3	Özka	Dubleks	14	TA	318	897	2800	40	Zirai
KLC-15504	12.5/80-15.3	9.50x15.3	Özka	Dubleks	14	KNK 48	318	897	2800	40	Zirai
KLC-15505	400/60-15.3	13.00x15.3	Petlas	Dubleks	14	UN1	400	874	2900	40	Zirai
KLC-15506	400/60-15.3	13.00x15.3	Petlas	Dubleks	14	IMF 18	400	874	3000	40	Zirai
KLC-15507	400/60-15.3	13.00x15.3	Petlas	Dubleks	16	IMF 18	400	874	3250	40	Zirai
KLC-15508	6.00/16	4.00x16	Petlas	İç Lastikli	6	TD 16	152	696	560	30	Zirai
KLC-15509	6.00/16	4.00x16	Anlaş	İç Lastikli	6	TD 16	152	696	560	30	Zirai
KLC-15510	6.00/16	4.00x16	Özka	İç Lastikli	6	KNK 30	152	696	560	30	Zirai
KLC-15511	6.00/16	4.00x16	Özka	İç Lastikli	6	TA	152	696	560	30	Zirai
KLC-15512	6.00/16	4.50x16	Petlas	İç Lastikli	6	TD 16	165	720	615	30	Zirai
KLC-15513	6.00/16	4.50x16	Anlaş	İç Lastikli	6	TD 16	165	70	615	30	Zirai
KLC-15514	7.50/16	5.50x16	Petlas	İç Lastikli	8	TD 16	191	769	875	30	Zirai
KLC-15515	7.50/16	5.50x16	Petlas	İç Lastikli	10	UN1	191	769	1250	30	Zirai
KLC-15516	7.50/16	5.50x16	Anlaş	İç Lastikli	12	RM 2	191	769	1450	30	Zirai
KLC-15517	7.50/16	5.50x16	Petlas	İç Lastikli	12	NB 37	191	769	1450	30	Zirai
KLC-15518	7.50/16	5.50x16	Petlas	İç Lastikli	12	PA 30	191	769	1450	30	Zirai
KLC-15519	7.50/16	5.50x16	Yerli	İç Lastikli	-	Kaplama	191	769	1450	30	Zirai
KLC-15520	9.00/16	7.00x16	Petlas	İç Lastikli	12	NT3	229	840	1650	30	Zirai
KLC-15521	9.00/16	7.00x16	Petlas	İç Lastikli	16	NT3	229	840	1900	30	Zirai
KLC-15522	9.00/16	7.00x16	Petlas	İç Lastikli	14	NT3	229	840	1800	30	Zirai



## LASTİKLER

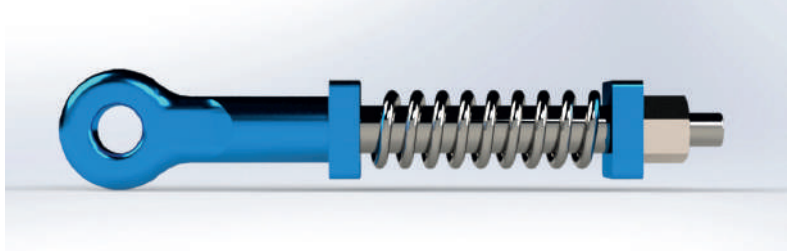


SİPARİŞ NO	LASTİK EBADI	UYGUN JANT	MARKA	TİP	KAT	MODEL	GENİŞLİK	DIŞ ÇAP	YÜK (kg)	HIZ	GRUP
KLC-15600	9.00/16	7.00x16	Lassa	İç Lastikli	12	OK 110	229	840	1800	30	Zirai
KLC-15601	9.00/16	7.00x16	Özka	İç Lastikli	12	KNK 26	229	840	1800	30	Zirai
KLC-15602	9.00/16	7.00x16	Petlas	İç Lastikli	14	NT 30	229	840	1800	30	Zirai
KLC-15603	9.00/16	7.00x16	Petlas	Dubleks	12	NT3	229	840	1650	30	Zirai
KLC-15604	10.5/65-16	7.00x16	Petlas	İç Lastikli	10	UN1	267	775	1550	40	Zirai
KLC-15605	19.0/45-17	16.00x17	Petlas	İç Lastikli	12	UN1	491	866	2575	40	Zirai
KLC-15606	15.0/55-17	13.00x17	Petlas	İç Lastikli	14	UN1	391	850	2300	40	Zirai
KLC-15607	245/70 R 17.5	6.70x17.5	Toyo/ Hankook	Dubleks	-	DÜZ	245	788	2575	100	Radyal
KLC-15608	500/50-17	16.00x17	Petlas	Dubleks	14	UN1	500	932	3250	40	Zirai
KLC-15609	12.5/80-18	9.00x18	Petlas	İç Lastikli	12	UN1	308	965	2650	40	Zirai
KLC-15610	13.0/65-18	11.00x18	Petlas	İç Lastikli	14	UN1	336	890	2575	40	Zirai
KLC-15611	285/70 R 19.5	7.50x19.5	Toyo/ Hankook	Dubleks	-	DÜZ	280	902	2800	100	Radyal
KLC-15612	435/50 R 19.5	14.00x19.5	Pirelli	Dubleks	-	DÜZ	435	930	4500	100	Radyal
KLC-15613	8.25/20	5.50x20	Petlas	İç Lastikli	12	PA 20	224	950	1900	30	Zirai
KLC-15614	9.00/20	7.00x20	Petlas	İç Lastikli	14	NB 27	247	1017	2060	30	Zirai
KLC-15615	7.50/20	5.50x20	Petlas	İç Lastikli	8	TD 16	205	915	1000	120	Zirai
KLC-15616	385/65 R 22.5	11.75x22.5	Toyo/ Hankook	Dubleks	-	DÜZ	384	1083	4500	40	Radyal
KLC-15617	550/60-22.5	16.00x22.5	Petlas	Dubleks	16	IMF18	537	1232	5150	40	Radyal
KLC-15618	600/50 22.5	20.00x22.5	Petlas	Dubleks	16	IMF18	611	1172	4000	40	Radyal
KLC-15619	230/95 R 44	7.00x44	Petlas	Dubleks	-	TA	230	1568	2000	40	Radyal
KLC-15620	210/95 R 32	7.00x32	Petlas	Dubleks	-	TA	210	1212	1180	40	Radyal
KLC-15621	230/95 R 32	7.00x32	Petlas	Dubleks	-	TA	230	1250	1700	40	Radyal



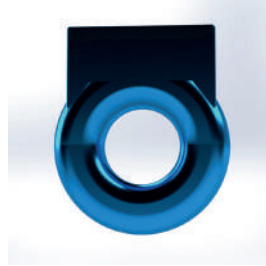
## İŞLENMİŞ OKBAŞI TAKIM

SİPARİŞ NO	KALINLIK A mm
KLC-15900	45
KLC-15901	50
KLC-15902	55
KLC-15903	60



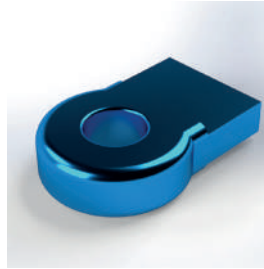
## TANKER DÖKÜM ÇEKİ

SİPARİŞ NO	ÜRÜN CİNSİ
KLC-16100	Tanker Döküm Çeki

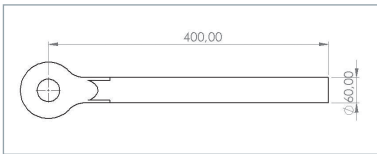


## RÖMORK DÖKÜM ÇEKİ

SİPARİŞ NO	ÜRÜN CİNSİ
KLC-16200	Römork Döküm Çeki

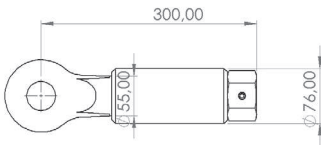


## OKBAŞI



SİPARİŞ NO	KALINLIK A mm	BOY B mm	DELİK ÇAPI C mm	KAPASİTE kg
KLC-15703	45	350	38	5.500
KLC-15704	45	500	38	6.000
KLC-15705	45	600	38	6.500
KLC-15706	50	350	38	7.000
KLC-15707	50	500	38	7.250
KLC-15708	50	600	38	7.500
KLC-15709	55	350	38	8.000
KLC-15710	55	500	38	8.250
KLC-15711	55	600	38	8.500
KLC-15712	60	350	38	8.750
KLC-15713	60	500	38	9.000
KLC-15714	60	600	38	9.250
KLC-15715	65	350	38	9.500
KLC-15716	65	500	38	9.750
KLC-15717	65	600	38	10.000

## BORULU OKBAŞI



SİPARİŞ NO	A mm	B mm	C mm	D mm	e mm	F mm	H mm	M	Kapasite Kg
KLC-15801	45	305	32	60	40	105	135	1 1/4"	5,000
KLC-15802	50	325	36	60	40	110	140	M36x3	6,000
KLC-15803	55	325	36	70	40	110	140	M36x3	7,000
KLC-15804	60	355	38	76	40	110	140	M36x3	8,000

## KARE KAPLIN



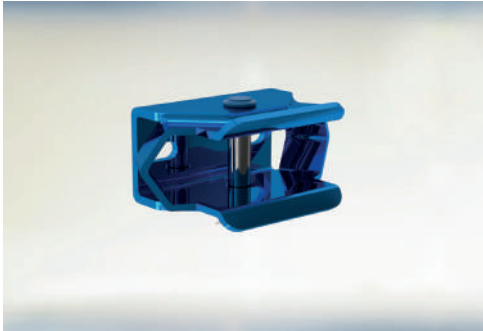
SİPARİŞ NO	KAPASİTE Kg	TİP
KLC-26000	1,100	Standart

## TAKSİ TOPUZU (VİDALI)



SİPARİŞ NO	KAPASİTE	TİP
KLC-26100	10 kN	N1-M1 Uzun
KLC-26101	10 kN	N1-M1 Kısa
KLC-26102	17 kN	M2-N2
KLC-26103	Standart	Frensiz
KLC-26104	Kısa	Somunlu

## MERKEZLİ ARKA ÇEKİ



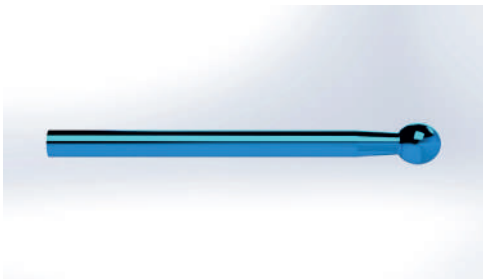
SİPARİŞ NO	AÇIKLAMA	TİP
KLC-26300	Pimli	Standart

## PİMLİ LAMA ÇEKİ



SİPARİŞ NO	AÇIKLAMA	TİP
KLC-26400	Pimli	Standart

## TAKSİ TOPUZU (UZUN)



SİPARİŞ NO	AÇIKLAMA
KLC-26502	Komple boy 420 mm. Kalınlık 32 mm.

## SANTRİFÜJ ( ŞAFTLI )



SİPARİŞ NO	TİP
KLC-17000	2" B Tipi
KLC-17001	3"
KLC-17002	2" - İtfaiye A Tipi
KLC-17003	Şaft Normal
KLC-17004	Şaft Kırmalı

## SU TANKI

SİPARİŞ NO	KAPASİTE kg	Uzunluk cm	En cm	Yükseklik cm
KLC-16900	1,000	120	112	77
KLC-16901	1,500	200	112	77
KLC-16902	2,000	200	130	100
KLC-16903	2,500	240	130	100
KLC-16904	2,000	200	130	100
KLC-16905	3,000	240	145	107
KLC-16906	3,000	300	130	100
KLC-16907	4,000	240	166	117
KLC-16908	5,000	300	166	117
KLC-16909	6,000	360	166	116
KLC-16910	8,000	480	166	116
KLC-16911	10,000	600	166	116

## SU TANKI GALVANİZLİ

SİPARİŞ NO	KAPASİTE Lt	BOY A mm	BOY B mm
KLC-17100	25	400	280
KLC-17101	35	510	280
KLC-17102	60	480	380
KLC-17103	70	600	380
KLC-17104	90	800	380



## SU TANKI KROM

SİPARİŞ NO	KAPASİTE Lt	BOY A mm	BOY B mm
KLC-17200	25	400	280
KLC-17201	35	600	280
KLC-17202	60	480	380
KLC-17203	70	600	280
KLC-17204	90	800	380
KLC-17205	200	700	600
KLC-17206	250	900	600



## SU TANKI PLASTİK

SİPARİŞ NO	KAPASİTE Lt
KLC-17300	30 - Kalın
KLC-17301	50 - Kalın



## TANKER KAPAĞI

SİPARİŞ NO	DİAMETER ÇAP A Q	TİP
KLC-17500	400	Standart
KLC-17501	450	Özel
KLC-17502	400	Galvanizli
KLC-17503	400	Siboplu
KLC-17104	90	800

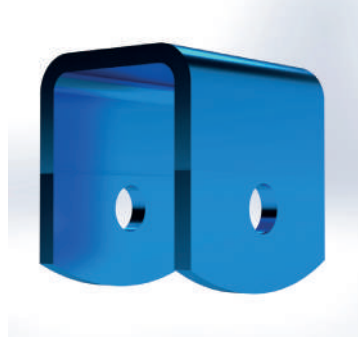




## MAKAS BAĞLANTI KULAKLARI



SİPARİŞ NO	CİNSİ
KLC-10288	Makas Kulağı Kayıcı 8 mm.
KLC-10289	Makas Kulağı 10 mm. (Ara 70)



SİPARİŞ NO	CİNSİ
KLC-10290	Makas Kulağı 8 mm. (Delikli)
KLC-10291	Makas Kulağı 10 mm. (Ara 70)



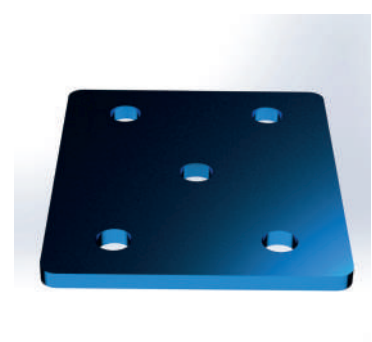
SİPARİŞ NO	CİNSİ
KLC-10292	Makas Kulağı Çift Delik 8 mm. (Ön)
KLC-10293	Makas Kulağı 10 mm. (Ara 70)



SİPARİŞ NO	CİNSİ
KLC-10294	Makas Kulağı (Lama)



SİPARİŞ NO	CİNSİ
KLC-10295	Makas Döküm Küpesi



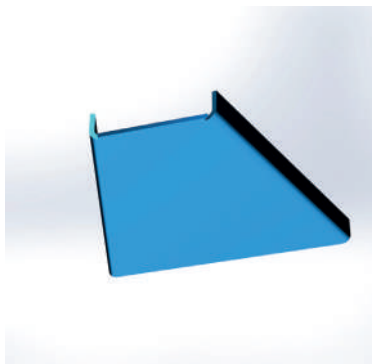
SİPARİŞ NO	CİNSİ
KLC-10296	Düz Dingil Pabuc 8 mm.
KLC-10297	Düz Dingil Pabuc 10 mm.



SİPARİŞ NO	CİNSİ
KLC-10298	Boru Dingil Pabuc



SİPARİŞ NO	CİNSİ
KLC-10299	Düz Makas Dikmesi



SİPARİŞ NO	CİNSİ
KLC-10300	Eğme Makas Dikmesi

## SOMUNLU U BAĞLANTI

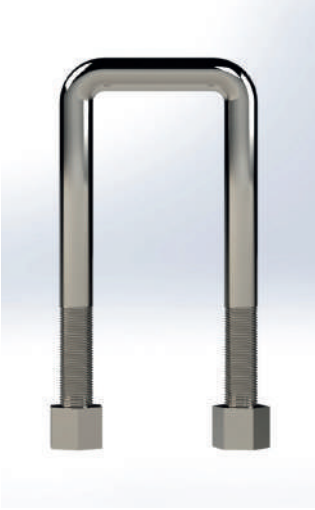
3/4" Kalın bağlantı kalın diş

SİPARİŞ NO	A mm	B mm	YIV ÖLÇÜSÜ C
KLC-10302	250	70	3/4"
KLC-10303	250	90	3/4"
KLC-10304	280	70	3/4"
KLC-10305	280	90	3/4"
KLC-10306	300	70	3/4"
KLC-10307	300	90	3/4"
KLC-10308	320	70	3/4"
KLC-10309	320	90	3/4"
KLC-10310	350	70	3/4"
KLC-10311	350	90	3/4"
KLC-10312	380	70	3/4"
KLC-10313	380	90	3/4"
KLC-10314	410	70	3/4"
KLC-10315	410	90	3/4"
KLC-10316	430	70	3/4"
KLC-10317	430	90	3/4"
KLC-10318	450	70	3/4"
KLC-10319	450	90	3/4"
KLC-10320	480	70	3/4"
KLC-10321	480	90	3/4"
KLC-10322	510	70	3/4"
KLC-10323	510	90	3/4"
KLC-10324	530	70	3/4"
KLC-10325	530	90	3/4"
KLC-10326	550	70	3/4"
KLC-10327	550	90	3/4"
KLC-10328	Bağlantı Laması		



## SOMUNLU U BAĞLANTI

5/8" İnce bağlantı kalın dış



SİPARİŞ NO	A mm	B mm	YİV ÖLÇÜSÜ C
KLC-10329	250	70	5/8"
KLC-10330	250	90	5/8"
KLC-10331	280	70	5/8"
KLC-10332	280	90	5/8"
KLC-10333	300	70	5/8"
KLC-10334	300	90	5/8"
KLC-10335	320	70	5/8"
KLC-10336	320	90	5/8"
KLC-10337	350	70	5/8"
KLC-10338	350	90	5/8"
KLC-10339	380	70	5/8"
KLC-10340	380	90	5/8"
KLC-10341	410	70	5/8"
KLC-10342	410	90	5/8"
KLC-10343	430	70	5/8"
KLC-10344	430	90	5/8"
KLC-10345	450	70	5/8"
KLC-10346	450	90	5/8"
KLC-10347	480	70	5/8"
KLC-10348	480	90	5/8"
KLC-10349	510	70	5/8"
KLC-10350	510	90	5/8"
KLC-10351	530	70	5/8"
KLC-10352	530	90	5/8"
KLC-10353	550	70	5/8"
KLC-10354	550	90	5/8"

## BABA ERKEĞİ



SİPARİŞ NO	TİPİ	A mm	B mm	C mm
KLC-19800	Baba Erkeği	22	18	54
KLC-19801	Baba Erkeği Arkası Düz	22		37

## İLAVE ERKEĞİ



SİPARİŞ NO	TİPİ	A mm	B mm	C mm
KLC-19900	İlave Erkeği	22	18	44

## UZUN ERKEK



SİPARİŞ NO	A mm	B mm
KLC-20000	22	80
KLC-20001	22	100
KLC-20002	22	140

## KALIP ERKEĞİ



SİPARİŞ NO	A mm	B mm	C mm
KLC-20100	5	55	22
KLC-20101	170	260	24
KLC-20102	250	325	24
KLC-20103	300	380	24

## TEKLİ ZİNCİRLİ ÇİVİ



SİPARİŞ NO	TİPİ
KLC-20200	Standart
KLC-20201	Yuvarlak

## ÇİFTLİ ZİNCİRLİ ÇİVİ



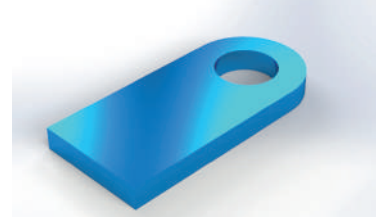
SİPARİŞ NO	TİPİ
KLC-20300	Standart

## DÜZ ÇİVİ



SİPARİŞ NO	KALINLIK - A
KLC-20400	5 mm
KLC-20401	5 mm Galvanizli
KLC-20402	6 mm
KLC-20403	6 mm Galvanizli

## KAPAK LAMASI



SİPARİŞ NO	A/TİP	B mm	Q mm
KLC-20500	40/10	127	25
KLC-20501	45/10	127	23
KLC-20502	50/10	127	28
KLC-20503	60/10	127	28

## KANCA YUVARLAĞI



SİPARİŞ NO	A/TİP	B mm	Q mm
KLC-20600	8	45	45
KLC-20601	10	47	50
KLC-20602	12	55	60
KLC-20603	14	70	65

## SACLI KANCA



SİPARİŞ NO	Ø mm	37	50
KLC-20701	8 mm Galvanizli	37	35
KLC-20702	10 mm	40	50
KLC-20703	10 mm Galvanizli	40	50
KLC-20704	12 mm	52	60
KLC-20705	12 mm Galvanizli	52	60

## AÇIK KASA KİLİDİ



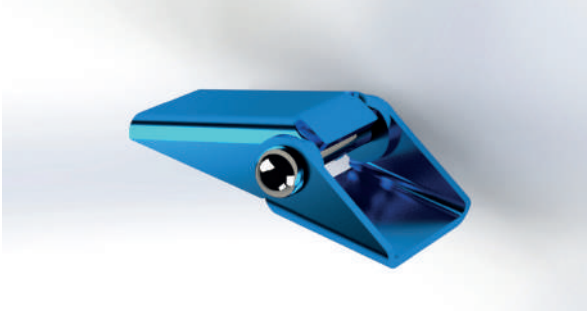
SİPARİŞ NO	TİPİ
KLC-20800	Açık Kasa Kilidi

## ZİNCİR S KANCASI

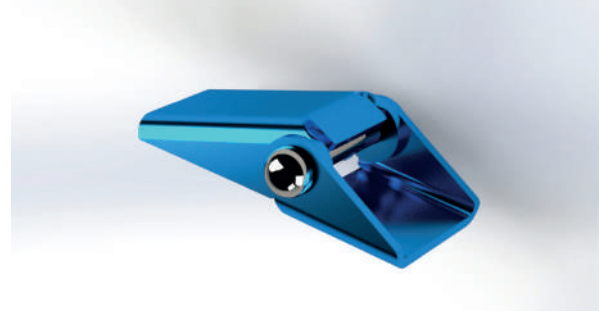


SİPARİŞ NO	TİPİ
KLC-20900	10 mm
KLC-20901	12 mm

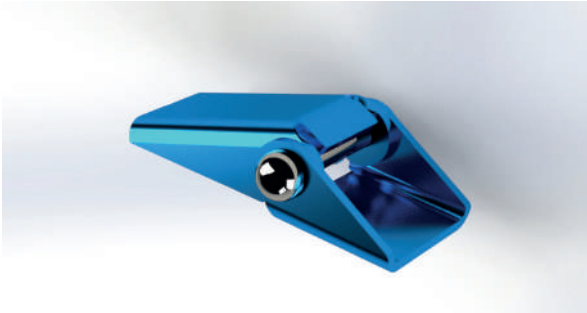


**BÜYÜK PİKAP MENTEŞE**

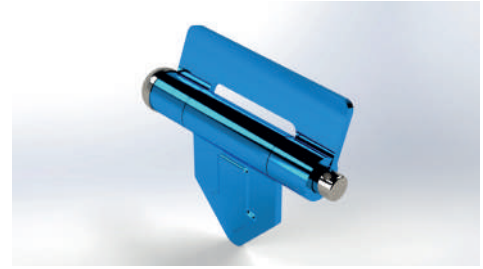
SİPARİŞ NO	TİPİ
KLC-22200	Büyük PİKAP Menteşe

**ORTA PİKAP MENTEŞE**

SİPARİŞ NO	TİPİ
KLC-22300	Orta PİKAP Menteşe

**KÜÇÜK PİKAP MENTEŞE**

SİPARİŞ NO	TİPİ
KLC-22400	Küçük PİKAP Menteşe

**KÜÇÜK ÜÇGEN MENTEŞE**

SİPARİŞ NO	TİPİ
KLC-22500	Normal
KLC-22501	Kısa Tip

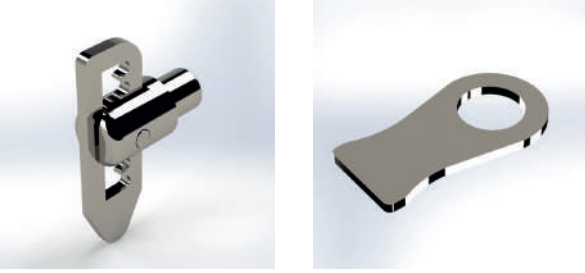
**BÜYÜK ÜÇGEN MENTEŞE**

SİPARİŞ NO	TİPİ
KLC-22600	Büyük ÜÇgen Menteşe

**UZUN BÜYÜK D MENTEŞE**

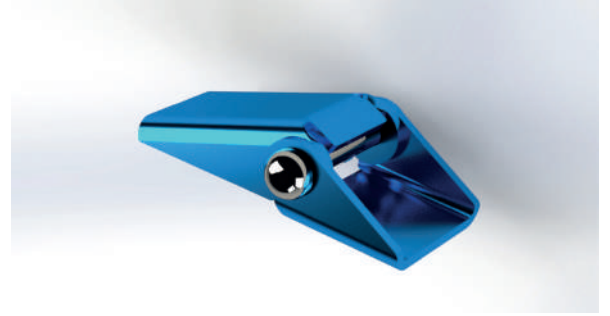
SİPARİŞ NO	TİPİ
KLC-22700	Uzun Büyük D Menteşe

## PİKAP KİLİDİ VE LAMASI



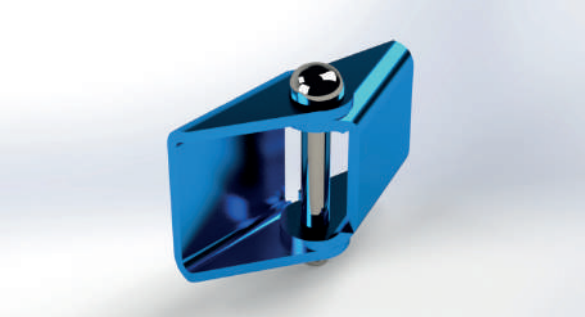
SİPARİŞ NO	TİPİ
KLC-21600	Tırtıllı
KLC-21601	Lama

## BÜYÜK DAMPER MENTEŞE



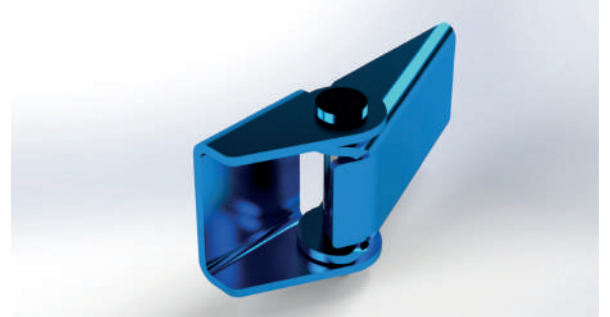
SİPARİŞ NO	TİPİ
KLC-21900	Büyük Damper Menteşe

## ORTA DAMPER MENTEŞE



SİPARİŞ NO	TİPİ
KLC-22000	Orta Damper Menteşe

## KÜÇÜK DAMPER MENTEŞE



SİPARİŞ NO	TİPİ
KLC-22100	Küçük Damper Menteşe

## ORTA D MENTEŞE



SİPARİŞ NO	TİPİ
KLC-22800	Orta D Menteşe

## KÜÇÜK D MENTEŞE



SİPARİŞ NO	TİPİ
KLC-22900	Küçük D Menteşe

## KÜÇÜK MENTEŞE



SİPARİŞ NO	TİPİ
KLC-23000	Küçük Menteşe

## D MENTEŞE



SİPARİŞ NO	TİPİ
KLC-23100	D Menteşe

## ARKA KAPAK YAYI



SİPARİŞ NO	TİPİ
KLC-24800	Arka Kapak Yayı

## TAKIM DOLABI (PLASTİK)



SİPARİŞ NO	AxBxC cm
KLC-24900	37x48x39 (50 S)
KLC-24901	46x58x60 (60 S)
KLC-24902	48x80x50 (80 S)

## YAPRAK MENTEŞE



SİPARİŞ NO	A mm	B mm	C mm
KLC-24600	40	90	4
KLC-24601	50	90	4
KLC-24602	60	115	5
KLC-24603	75	110	5

## YANGIN TÜPÜ DOLABI (PLASTİK)



SİPARİŞ NO	Kg
KLC-25100	Yangın Tüpü Dolabı (Plastik)

## TEKERLEK TAKOZU PLASTİK



SİPARİŞ NO	TİP
KLC-25200	Sarı Büyük
KLC-25201	Sarı Orta
KLC-25202	Sarı Küçük

## PLASTİK ÇAMURLUK



SİPARİŞ NO	TİP	A cm	B cm	C cm	Çevre cm
KLC-25300	Çift Teker	130	65	65	208
KLC-25301	Çift Teker Yarım	65	65	65	104
KLC-25302	Tek Teker	124	42	58	188
KLC-25302	Tek Teker Yarım	62	42	58	94

## ÇAMURLUK KELEPÇESİ



SİPARİŞ NO	ÖLÇÜLER	A cm	B cm	C cm
KLC-25400	Sac 42 (mm)	50	255	180
KLC-25401	Sac 52 (mm)	50	255	180
KLC-25402	Plastik 42 (mm)	68	245	220

## ÇAMURLUK BORUSU



SİPARİŞ NO	A (cm)
KLC-25500	58
KLC-25501	78

## ARMUT TAKOZ



SİPARİŞ NO	TİP
KLC-25700	Küçük
KLC-25701	Büyük

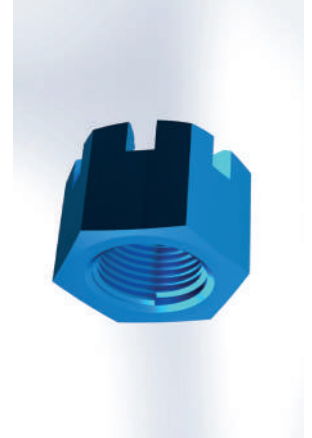
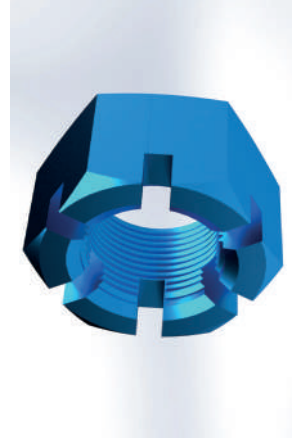
## SOMUNLU BİJON

SİPARİŞ NO	YİV ÖLÇÜSÜ	BOY A mm	TIRTIR ÜSTÜ B mm	YİV ÖLÇÜSÜ
KLC-18100	M12x1,5	40	Tofaş Bijonu Somunsuz	
KLC-18101	M12x1,5	45	13.5	1/2"
KLC-18102	M16x1,5	55	15.5	5/8"
KLC-18103	M18x1,5	60	20.5	3/4"
KLC-18104	M18x1,5	70	20.5	3/4"
KLC-18105	M18x1,5	80	20.5	Papatya
KLC-18106	M20x1,5	70	22	Papatya
KLC-18107	M22x1,5	75	24.5	Papatya



## AKİS SOMUNU

SİPARİŞ NO	DIŞ ÇAP A mm	İÇ ÇAP B mm	YÜKSEKLİK C mm
KLC-18200	36	24	24
KLC-18201	46	30	30
KLC-18202	50	30	30
KLC-18203	55	36	31
KLC-18204	60	37	32
KLC-18205	70	43	40
KLC-18206	80	43	40



## BİJON ANAHTARI

SİPARİŞ NO	İÇ ÇAP A mm
KLC-18300	24
KLC-18301	27
KLC-18302	32



## FREN LİFTİ KROMLU



SİPARİŞ NO	ÜRÜN CİNSİ
KLC-14500	Büyük
KLC-14501	Küçük

## PERNO YUVASI



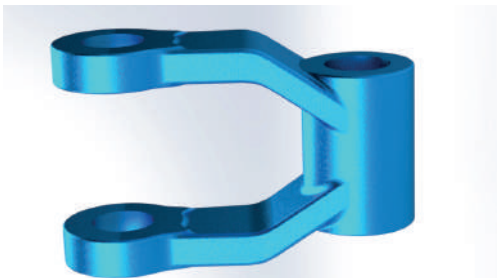
SİPARİŞ NO	İÇ ÇAP B mm
KLC-18500	20
KLC-18501	26

## MAKAS SACI



SİPARİŞ NO	TİPİ
KLC-18600	Makas Sacı

## DÖKÜM KÜPESİ



SİPARİŞ NO	TİPİ
KLC-18700	Kısa
KLC-18701	Uzun



### S KANCA 8 mm



SİPARİŞ NO	TİPİ
KLC-24400	S Kanca 8 mm

### S KANCA 10 mm



SİPARİŞ NO	TİPİ
KLC-24500	S Kanca 10 mm

### S KANCA 12 mm



SİPARİŞ NO	TİPİ
KLC-24600	S Kanca 12 mm

### HAVA FREN SİSTEMİ



SİPARİŞ NO	TİP
KLC-17600	Tek Körüklü
KLC-17601	Çift Körüklü
KLC-17602	Dört Körüklü
	Ayrı Çubuk Tahliye Valf Farkı

### HAZIR OK

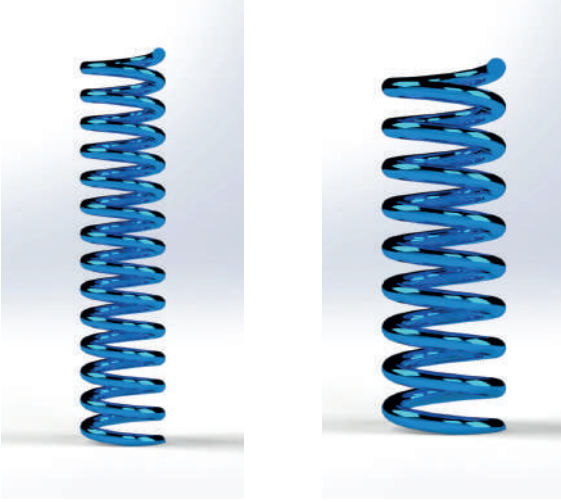


SİPARİŞ NO	BOY
KLC-16800	150 CM



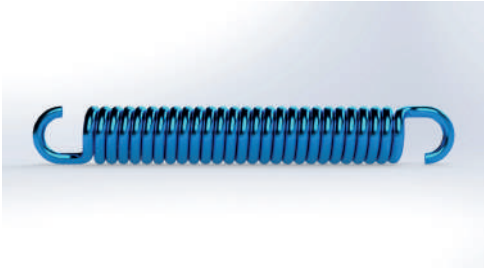
SİPARİŞ NO	BOY
KLC-16801	175 CM

## OKBAŞI YAYI



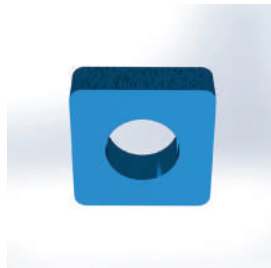
SİPARİŞ NO	UZUNLUK B mm	DELİK ÇAPI A mm
KLC-16300	250	37
KLC-16301	150	37
KLC-16302	250	42
KLC-16303	150	42
KLC-16304	250	47
KLC-16305	150	48
KLC-16306	250	52
KLC-16307	150	52
KLC-16308	250	57
KLC-16309	150	57
KLC-16310	250	62
KLC-16311	150	62

## KÜLTÜVATÖR YAYI



SİPARİŞ NO	KALINLIK A mm	UZUNLUK B mm	SARIM SAYISI
KLC-16400	8	270	24
KLC-16401	10	330	26
KLC-16402	11	350	23

## OKBAŞI YATAĞI



SİPARİŞ NO	DELİK ÇAPI A mm
KLC-16500	37
KLC-16501	42
KLC-16502	47
KLC-16503	52
KLC-16504	57
KLC-16505	62

**STOP LAMBASI 275 TİPİ**

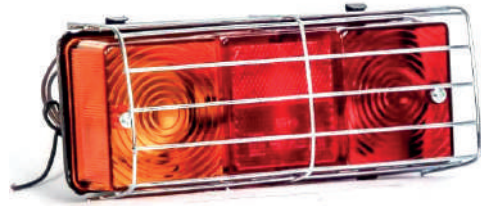
SİPARİŞ NO	TİPİ
KLC-18800	Standart
KLC-18801	E Belgeli

**STOP LAMBASI 250 TİPİ**

SİPARİŞ NO	TİPİ
KLC-18900	Standart
KLC-18901	E Belgeli

**STOP LAMBASI 240 TİPİ**

SİPARİŞ NO	TİPİ
KLC-19000	Stop Lambası 240

**STOP LAMBASI KAFESLİ**

SİPARİŞ NO	TİPİ
KLC-19100	275 Tipi
KLC-19101	240 Tipi

**ÜÇGEN FOSFOR**

SİPARİŞ NO	TİPİ
KLC-19200	Kırmızı
KLC-19201	Sarı

**ÜÇGEN REFLEKTÖR**

SİPARİŞ NO	TİPİ
KLC-19300	E Belgeli

## TREYLER REFLEKTÖR



SİPARİŞ NO	TİPİ
KLC-19400	E Belgeli Trailer Takım (2 Adet)

## KAMYON REFLEKTÖR



SİPARİŞ NO	TİPİ
KLC-19500	E Belgeli Kamyon Takım (2 Adet)

## ŞERİT REFLEKTÖR



SİPARİŞ NO	TİPİ
KLC-19600	Şerit Reflektör (Beyaz)
KLC-19601	Şerit Reflektör (Kırmızı)
KLC-19602	Şerit Reflektör (Sarı)

## RÖMORK TOZLUĞU



SİPARİŞ NO	TİPİ
KLC-19700	Römork Tozluđu (2 Adet)

## HİDROLİK LİFT HORTUMU

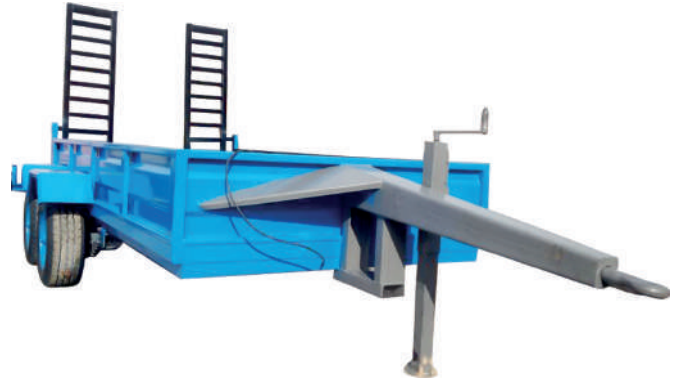


SİPARİŞ NO	BOY cm	KALINLIK mm	RAKOR		BAĞLANTI
			SOL	SAĞ	
KLC-12000	38	3/8 - 10	9/16-5/8-3/4	3/4	Dişi + Dişi
KLC-12001	50	3/8 - 10	9/16-5/8-3/5	3/4	Dişi + Dişi
KLC-12002	60	3/8 - 10	9/16-5/8-3/6	3/4	Dişi + Dişi
KLC-12003	120	3/8 - 10	9/16-5/8-3/7	1/2 NPT	Dişi + ERKEK
KLC-12004	150	3/8 - 10	9/16-5/8-3/8	1/2 NPT	Dişi + ERKEK
KLC-12005	180	3/8 - 10	9/16-5/8-3/9	1/2 NPT	Dişi + ERKEK
KLC-12006	220	3/8 - 10	9/16-5/8-3/10	1/2 NPT	Dişi + ERKEK
KLC-12007	250	3/8 - 10	9/16-5/8-3/11	1/2 NPT	Dişi + ERKEK
KLC-12008	300	3/8 - 10	9/16-5/8-3/12	1/2 NPT	Dişi + ERKEK
KLC-12009	350	3/8 - 10	9/16-5/8-3/13	1/2 NPT	Dişi + ERKEK
KLC-12010	38	1/2 - 12,5	3/4	3/4	Dişi + Dişi
KLC-12011	50	1/2 - 12,5	3/4	3/4	Dişi + Dişi
KLC-12012	60	1/2 - 12,5	3/4	3/4	Dişi + Dişi
KLC-12013	120	1/2 - 12,5	3/4	1/2 NPT	Dişi + ERKEK
KLC-12014	150	1/2 - 12,5	3/4	1/2 NPT	Dişi + ERKEK
KLC-12015	180	1/2 - 12,5	3/4	1/2 NPT	Dişi + ERKEK
KLC-12016	220	1/2 - 12,5	3/4	1/2 NPT	Dişi + ERKEK
KLC-12017	250	1/2 - 12,5	3/4	1/2 NPT	Dişi + ERKEK
KLC-12018	300	1/2 - 12,5	3/4	1/2 NPT	Dişi + ERKEK
KLC-12019	350	1/2 - 12,5	3/4	1/2 NPT	Dişi + ERKEK



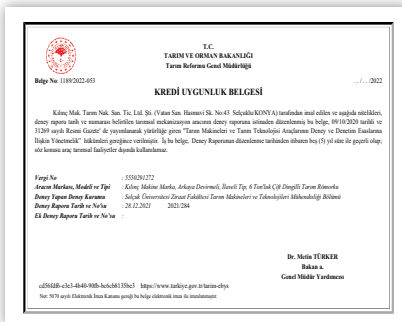
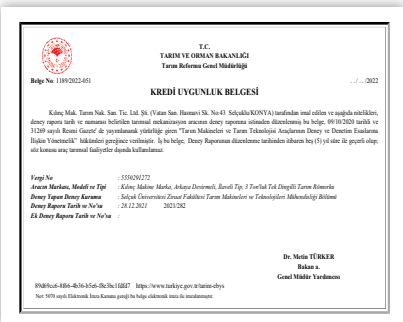
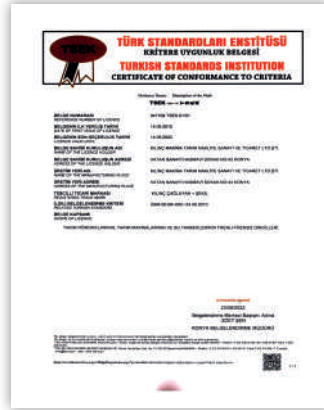








# BELGELERİMİZ





www.kilinctarmak.com



BEREKETİ TAŞIYAN

USTA ELLER

**KILINÇ**  
MAKİNA

www.kilinctarmak.com

✉ info@kilinctarmak.com **f** /Kilincmakinatirim **t** /kilinctarmak **@** /kilinctarmak

**444 21 95**

🌐 Vatan Sanayi Hasmavi Sokak No: 43 (Ereğli Yolu Üzeri) KONYA 📞 +90 332 355 20 00 - 355 23 66 - Fax: +90 332 355 23 67